

À des fins de recherche uniquement

Anticorps Monoclonal anti-KLRG1

Numéro de catalogue: **CL647-65084**



Informations de base

Numéro de catalogue:
CL647-65084

Taille:
100tests , 5 µl/test

Hôte:
Golden Syrian Hamster

Isotype:
IgG

Numéro d'acquisition GenBank:
BC101953

Identification du gène (NCBI):
50928

Nom complet:
killer cell lectin-like receptor
subfamily G, member 1

Méthode de purification:
Purification par affinité

CloneNo.:
2F1

Excitation/Emission maxima
wavelengths:
654 nm / 674 nm

Applications

Applications testées:
FC

Spécificité de l'espèce:
souris

Informations générales

KLRG1 (killer cell lectin-like receptor subfamily G, member 1) is a C-type lectin inhibitory receptor that contains an immunoreceptor tyrosine-based inhibitory motif (ITIM) in its cytoplasmic domain. KLRG1 is expressed by subsets of NK and T cells, existing both as a monomer and as a disulfide-linked homodimer (PMID: 10741410; 19604491). It is considered to be a cell differentiation marker for NK and T cells and is strongly induced by viral and other infections (PMID: 20373518). Through interactions with members of the cadherin family, KLRG1 plays an inhibitory role on NK- and T-cell function (PMID: 19009530; 20373518).

Stockage

Stockage:

Stocker à une température comprise entre 2 °C et 8 °C. Éviter toute exposition à la lumière.

Tampon de stockage:

PBS avec azoture de sodium à 0,1 % et BSA à 0,5 %, pH 7,3.

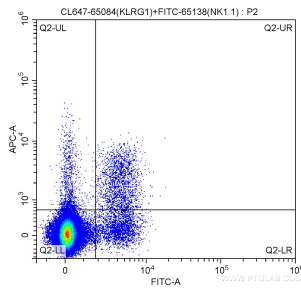
For technical support and original validation data for this product please contact:

T: 1 (888) 4PTGLAB (1-888-478-4522) (toll free
in USA), or 1(312) 455-8498 (outside USA)

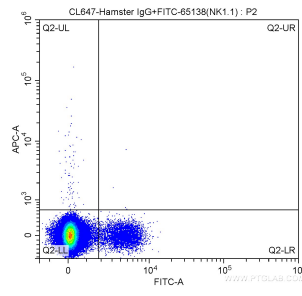
E: proteintech@ptglab.com
W: ptglab.com

This product is exclusively available under Proteintech Group brand and is not available to purchase from any other manufacturer.

Données de validation sélectionnées



1X10⁶ mouse splenocytes were surface stained with FITC Anti-Mouse NK1.1 (CD161) (FITC-65138, Clone: PK136) and 5 ul CoraLite® Plus 647 Anti-Mouse KLRG1 (CL647-65084, Clone: 2F1). Cells were not fixed.



1X10⁶ mouse splenocytes were surface stained with FITC Anti-Mouse NK1.1 (CD161) (FITC-65138, Clone: PK136) and CoraLite® Plus 647 conjugated Hamster IgG isotype control. Cells were not fixed.