

À des fins de recherche uniquement

# Anticorps Monoclonal anti-CD16

Numéro de catalogue: CL647-65090



## Informations de base

Numéro de catalogue:

CL647-65090

Taille:

100 tests, 5 µl/test

Hôte:

Mouse

Isotype:

IgG1, kappa

Numéro d'acquisition GenBank:

BC017865

Identification du gène (NCBI):

2214

Nom complet:

Fc fragment of IgG, low affinity IIIa, receptor (CD16a)

MW calculé

254 aa, 29 kDa

Méthode de purification:

Purification par affinité

CloneNo.:

3G8

Excitation/Emission maxima

wavelengths:

654 nm / 674 nm

## Applications

Applications testées:

FC

Spécificité de l'espèce:

Humain

## Informations générales

CD16 is a 50-70-kDa low affinity Fc receptor found on the surface of natural killer cells, neutrophil polymorphonuclear leukocytes, monocytes and macrophages. CD16 mediates antibody-dependent cellular cytotoxicity (ADCC) and other antibody-dependent responses, such as phagocytosis. CD16 has been identified as Fc receptors FcγRIIIa (CD16a) and FcγRIIIb (CD16b), encoded by two nearly identical genes, FCGR3A and the FCGR3B. Clone 3G8 recognizes both the CD16a and CD16b (PMID: 7592758).

## Stockage

Stockage:

Store at 2-8°C. Avoid exposure to light. Stable for one year after shipment.

Tampon de stockage:

PBS avec azoture de sodium à 0,1 % et BSA à 0,5 %, pH 7,3.

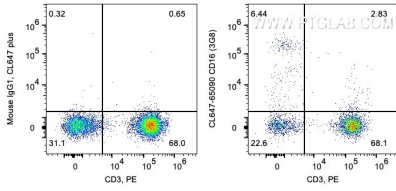
For technical support and original validation data for this product please contact:

T: 1 (888) 4PTGLAB (1-888-478-4522) (toll free in USA), or 1(312) 455-8498 (outside USA)

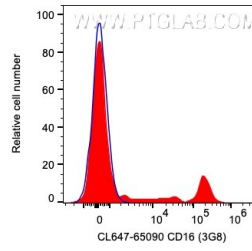
E: [proteintech@ptglab.com](mailto:proteintech@ptglab.com)  
W: [ptglab.com](http://ptglab.com)

This product is exclusively available under Proteintech Group brand and is not available to purchase from any other manufacturer.

## Données de validation sélectionnées



1X10<sup>6</sup> human PBMCs were surface co-stained with PE Anti-Human CD3 and 5 ul Coralite® Plus 647 Anti-Human CD16 (CL647-65090, Clone: 3G8) or Mouse IgG1 Isotype Control. Cells were not fixed. Lymphocytes were gated.



1X10<sup>6</sup> human PBMCs were surface co-stained with PE Anti-Human CD3 and 5 ul Coralite® Plus 647 Anti-Human CD16 (CL647-65090, Clone: 3G8) or Mouse IgG1 Isotype Control. Cells were not fixed. CD3-negative lymphocytes were gated.