

À des fins de recherche uniquement

Anticorps Monoclonal anti-CD38

Numéro de catalogue: **CL647-65107**



Informations de base

Numéro de catalogue: CL647-65107	Numéro d'acquisition GenBank: BC007964	Méthode de purification: Purification par affinité
Taille: 100tests , 5 µl/test	Identification du gène (NCBI): 952	CloneNo.: HB7
Hôte: Mouse	Nom complet: CD38 molecule	Excitation/Emission maxima wavelengths: 654 nm / 674 nm
Isotype: IgG1, kappa	MW calculé 300 aa, 34 kDa	

Applications

Applications testées:
FC

Spécificité de l'espèce:
Humain

Informations générales

CD38, also known as ADP-ribosyl cyclase 1, is a type II transmembrane glycoprotein with a short N-terminal cytoplasmic tail, a single membrane-spanning domain, and a C-terminal extracellular region with four N-glycosylation sites (PMID: 2319135). The extracellular domain of CD38 has bifunctional enzyme activities that catalyze synthesis of cyclic ADP ribose from nicotinamide adenine dinucleotide (NAD) and hydrolysis of cyclic ADP ribose to adenosine diphosphoribose (PMID: 10636863). CD38 is expressed on a variety of hematopoietic and non-hematopoietic cells and is involved in diverse processes such as generation of calcium-mobilizing metabolites, cell activation, and chemotaxis (PMID: 25938500).

Stockage

Stockage:
Store at 2-8°C. Avoid exposure to light. Stable for one year after shipment.

Tampon de stockage:
PBS avec azoture de sodium à 0,1 % et BSA à 0,5 %, pH 7,3.

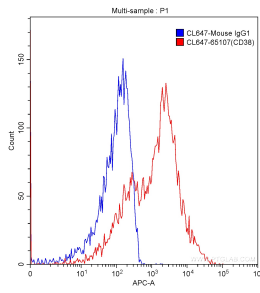
For technical support and original validation data for this product please contact:

T: 1 (888) 4PTGLAB (1-888-478-4522) (toll free in USA), or 1(312) 455-8498 (outside USA)

E: proteintech@ptglab.com
W: ptglab.com

This product is exclusively available under Proteintech Group brand and is not available to purchase from any other manufacturer.

Données de validation sélectionnées



100 ul human peripheral blood were surface stained 5.00 ul/test CoraLite® Plus 647-conjugated Anti-Human CD38 (CL647-65107, Clone: HB7) (red) or isotype control antibody (blue). Lymphocytes were gated for analysis. Cells were not fixed.