

À des fins de recherche uniquement

Anticorps Monoclonal anti-CD62L (L-Selectin)



Numéro de catalogue: **CL647-65123**

Informations de base

Numéro de catalogue:

CL647-65123

Taille:

100 tests, 5 µl/test

Hôte:

Rat

Isotype:

IgG2a, kappa

Numéro d'acquisition GenBank:

BC052681

Identification du gène (NCBI):

20343

Nom complet:

selectin, lymphocyte

Méthode de purification:

Purification par affinité

CloneNo.:

MEL-14

Dilutions recommandées:

IF 1:200-1:800

Excitation/Emission maxima
wavelengths:

654 nm / 674 nm

Applications

Applications testées:

FC, IF

Spécificité de l'espèce:

souris

Contrôles positifs:

IF : splénocytes de souris,

Informations générales

CD62L, also known as L-selectin or SELL, is a member of the selectin family of adhesion molecules that also include CD62E (E-selectin) and CD62P (P-selectin) (PMID: 2663882, 2473156, 1382078). CD62L is a highly glycosylated protein of 95-105 kDa on neutrophils and 74 kDa on lymphocytes (PMID: 1382078; 1694883, 1695155). CD62L is expressed on the surface of most leukocytes, including lymphocytes, neutrophils, monocytes, eosinophils, hematopoietic progenitor cells, and immature thymocytes (PMID: 1694883, 1688580). It mediates the binding of lymphocytes to high endothelial venules (HEV) of peripheral lymph nodes through interactions with a constitutively expressed ligand, and is also involved in lymphocyte, neutrophil, and monocyte attachment to endothelium at sites of inflammation (PMID: 1382078).

Stockage

Stockage:

Store at 2-8°C. Avoid exposure to light. Stable for one year after shipment.

Tampon de stockage:

PBS avec azoture de sodium à 0,1 % et BSA à 0,5 %, pH 7,3.

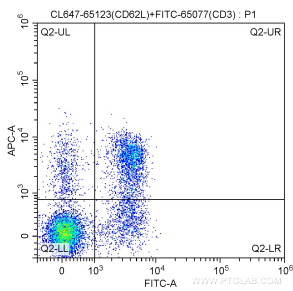
For technical support and original validation data for this product please contact:

T: 1 (888) 4PTGLAB (1-888-478-4522) (toll free
in USA), or 1(312) 455-8498 (outside USA)

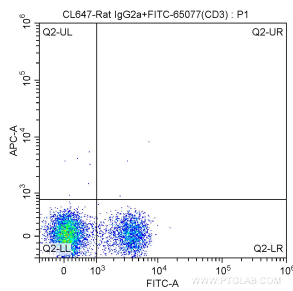
E: proteintech@ptglab.com
W: ptglab.com

This product is exclusively available under Proteintech Group brand and is not available to purchase from any other manufacturer.

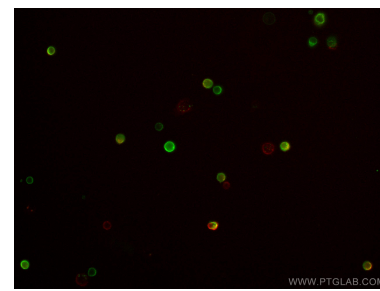
Données de validation sélectionnées



1X10⁶ C57BL/6 mouse splenocytes were surface stained with FITC-Anti-Mouse CD3 (FITC-65077, Clone: 17A2) and 5.00 ul CoraLite® Plus 647-conjugated Anti-Mouse CD62L (L-Selectin) (CL647-65123, Clone: MEL-14). Cells were not fixed.



1X10⁶ C57BL/6 mouse splenocytes were surface stained with FITC-Anti-Mouse CD3 (FITC-65077, Clone: 17A2) and CoraLite® Plus 647-conjugated Rat IgG2a isotype control antibody. Cells were not fixed.



Immunofluorescent analysis of mouse splenocytes using CoraLite® Plus 647-conjugated CD62L (L-Selectin) antibody (CL647-65123, Clone: MEL-14, red), and CoraLite® 488-conjugated CD3 antibody (CL488-65077, Clone: 17A2, green).