

À des fins de recherche uniquement

# Anticorps Monoclonal anti-IgG2b Isotype Control



Numéro de catalogue: **CL647-65128**

## Informations de base

Numéro de catalogue:

CL647-65128

Taille:

100ug , 200 µg/ml

Hôte:

Mouse

Isotype:

IgG2b

Numéro d'acquisition GenBank:

Identification du gène (NCBI):

16016

Nom complet:

immunoglobulin heavy chain 3  
(serum IgG2b)

Méthode de purification:

Purification par affinité

CloneNo.:

MPC-11

Excitation/Emission maxima  
wavelengths:

654 nm / 674 nm

## Applications

Applications testées:

FC

Spécificité de l'espèce:

## Informations générales

The MPC-11 immunoglobulin is useful as an isotype-matched control. The MPC-11 immunoglobulin has an unknown binding specificity and is used as an isotype control for mouse IgG2b antibodies. This antibody has been quality-tested for flow cytometry as negative control.

## Stockage

Stockage:

Store at 2-8°C. Avoid exposure to light. Stable for one year after shipment.

Tampon de stockage:

PBS avec azoture de sodium à 0,1 % et BSA à 0,5 %, pH 7,3.

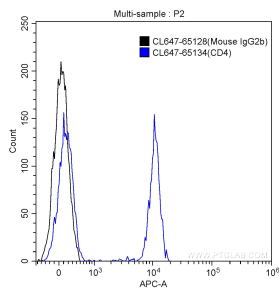
For technical support and original validation data for this product please contact:

T: 1 (888) 4PTGLAB (1-888-478-4522) (toll free  
in USA), or 1(312) 455-8498 (outside USA)

E: [proteintech@ptglab.com](mailto:proteintech@ptglab.com)  
W: [ptglab.com](http://ptglab.com)

**This product is exclusively available under Proteintech Group brand and is not available to purchase from any other manufacturer.**

## Données de validation sélectionnées



1X10<sup>6</sup> human peripheral blood lymphocytes were surface stained with 0.5 ug Coralite® Plus 647 Mouse IgG2b Isotype Control (CL647-65128, Clone:MPC-11) (blue) or Coralite® Plus 647-conjugated Anti-Human CD4 (CL647-65134, clone: OKT4) (black). Cells were not fixed.