

À des fins de recherche uniquement

Anticorps Monoclonal anti-NK1.1 (CD161)



Numéro de catalogue: **CL647-65138**

Informations de base

Numéro de catalogue:

CL647-65138

Taille:

100tests , 5 µl/test

Hôte:

Mouse

Isotype:

IgG2a, kappa

Numéro d'acquisition GenBank:

BC120707

Identification du gène (NCBI):

17057

Nom complet:

killer cell lectin-like receptor
subfamily B member 1A

Méthode de purification:

Purification par affinité

CloneNo.:

PK136

Excitation/Emission maxima
wavelengths:

654 nm / 674 nm

Applications

Applications testées:

FC

Spécificité de l'espèce:

souris

Informations générales

NK1.1 (CD161), also known as KLRB1 or NKR-P1A, is a type II transmembrane C-type lectin-like receptor and is expressed on the cell membrane as disulfide-linked homodimer (PMID: 8077657). It is expressed by the majority of NK cells and subsets of peripheral T cells, including both CD4+ and CD8+ T cells, and is expressed preferentially on adult T cells with a "memory" antigenic phenotype (PMID: 8077657; 22566826). Expression of CD161 correlates with the cytotoxic function of CD16+ NK cells, and ligation of CD161 with its ligand LLT1 inhibits NK cell cytotoxicity and cytokine secretion (PMID: 29686665).

Stockage

Stockage:

Store at 2-8°C. Avoid exposure to light. Stable for one year after shipment.

Tampon de stockage:

PBS avec azoture de sodium à 0,1 % et BSA à 0,5 %, pH 7,3.

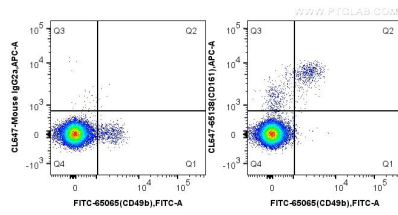
For technical support and original validation data for this product please contact:

T: 1 (888) 4PTGLAB (1-888-478-4522) (toll free
in USA), or 1(312) 455-8498 (outside USA)

E: proteintech@ptglab.com
W: ptglab.com

This product is exclusively available under Proteintech Group brand and is not available to purchase from any other manufacturer.

Données de validation sélectionnées



1X10⁶ C57BL/6 mouse splenocytes were surface stained with FITC Anti-Mouse CD49b (DX5) (FITC-65065, Clone: DX5) and CoraLite® Plus 647-conjugated Mouse IgG2a isotype control antibody (left) or 5.00 ul CoraLite® Plus 647-conjugated Anti-Mouse NK1.1 (CD161) (CL647-65138, Clone: PK136) (right). Cells were not fixed.