

À des fins de recherche uniquement

# Anticorps Monoclonal anti-CD8

Numéro de catalogue: **CL647-65146**



## Informations de base

Numéro de catalogue:

CL647-65146

Taille:

100tests , 5 µl/test

Hôte:

Mouse

Isotype:

IgG1, kappa

Numéro d'acquisition GenBank:

BC025715

Identification du gène (NCBI):

925

Nom complet:

CD8a molecule

MW calculé

235 aa, 26 kDa

Méthode de purification:

Purification par affinité

CloneNo.:

SK1

Excitation/Emission maxima  
wavelengths:

654 nm / 674 nm

## Applications

Applications testées:

FC

Spécificité de l'espèce:

Humain

## Informations générales

CD8 is a transmembrane glycoprotein composed of two disulfide-linked chains. It can be present as a homodimer of CD8 $\alpha$  or as a heterodimer of CD8 $\alpha$  and CD8 $\beta$  (PMID: 3264320; 8253791). CD8 is found on most thymocytes. The majority of class I-restricted T cells express mostly the CD8 $\alpha\beta$  heterodimer while CD8 $\alpha\alpha$  homodimers alone have been found on some gut intraepithelial T cells , on some T cell receptor (TCR)  $\gamma\delta$  T cells and on NK cells (PMID: 2111591; 1831127; 8420975). CD8 acts as a co-receptor that binds to MHC class-I and participates in cytotoxic T cell activation (PMID: 8499079). During T cell development, CD8 is required for positive selection of CD4-/CD8+ T cells (PMID: 1968084).

## Stockage

Stockage:

Store at 2-8°C. Avoid exposure to light. Stable for one year after shipment.

Tampon de stockage:

PBS avec azoture de sodium à 0,1 % et BSA à 0,5 %, pH 7,3.

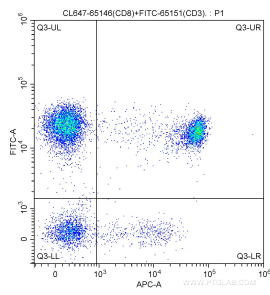
For technical support and original validation data for this product please contact:

T: 1 (888) 4PTGLAB (1-888-478-4522) (toll free  
in USA), or 1(312) 455-8498 (outside USA)

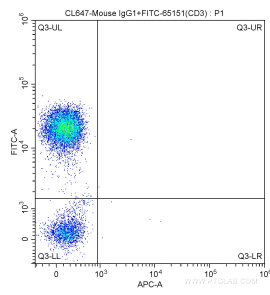
E: [proteintech@ptglab.com](mailto:proteintech@ptglab.com)  
W: [ptglab.com](http://ptglab.com)

This product is exclusively available under Proteintech Group brand and is not available to purchase from any other manufacturer.

## Données de validation sélectionnées



100 ul human peripheral blood were surface stained with FITC Anti-Human CD3 (FITC-65151, Clone: UCHT1) and 5.00 ul CoraLite® Plus 647-conjugated Anti-Human CD8 (CL647-65146, Clone: SK1). Lymphocytes were gated for analysis. Cells were not fixed.



100 ul human peripheral blood were surface stained with FITC Anti-Human CD3 (FITC-65151, Clone: UCHT1) and CoraLite® Plus 647-conjugated Mouse IgG1 isotype control antibody. Lymphocytes were gated for analysis. Cells were not fixed.