

À des fins de recherche uniquement

Anticorps Monoclonal anti-CD3

Numéro de catalogue: **CL647-65151**



Informations de base

Numéro de catalogue:

CL647-65151

Taille:

100tests , 5 µl/test

Hôte:

Mouse

Isotype:

IgG1, kappa

Numéro d'acquisition GenBank:

BC049847

Identification du gène (NCBI):

916

Nom complet:

CD3e molecule, epsilon (CD3-TCR complex)

MW calculé

207 aa, 23 kDa

Méthode de purification:

Purification par affinité

CloneNo.:

UCHT1

Excitation/Emission maxima wavelengths:

654 nm / 674 nm

Applications

Applications testées:

FC

Spécificité de l'espèce:

Humain

Informations générales

CD3 is a multimeric protein associated with the T-cell receptor (TCR) to form a complex involved in antigen recognition and signal transduction (PMID: 15885124). CD3 is composed of CD3 γ , δ , ϵ , and ζ chains (PMID: 1826255). It is expressed by thymocytes in a developmentally regulated manner, T cells, and some NK cells (PMID: 3289580). The TCR recognizes antigens bound to major histocompatibility complex (MHC) molecules. TCR-mediated peptide-MHC recognition is transmitted to the CD3 complex, leading to the intracellular signal transduction (PMID: 11985657).

Stockage

Stockage:

Store at 2-8°C. Avoid exposure to light. Stable for one year after shipment.

Tampon de stockage:

PBS avec azoture de sodium à 0,1 % et BSA à 0,5 %, pH 7,3.

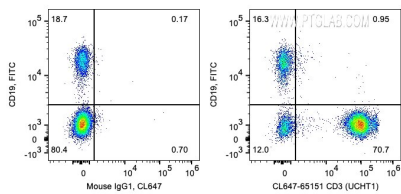
For technical support and original validation data for this product please contact:

T: 1 (888) 4PTGLAB (1-888-478-4522) (toll free in USA), or 1(312) 455-8498 (outside USA)

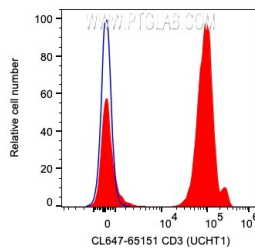
E: proteintech@ptglab.com
W: ptglab.com

This product is exclusively available under Proteintech Group brand and is not available to purchase from any other manufacturer.

Données de validation sélectionnées



1X10⁶ human PBMCs were surface co-stained with FITC Anti-Human CD19 and 5 ul CoraLite® Plus 647 Anti-Human CD3 (CL647-65151, Clone: UCHT1) or Mouse IgG1 Isotype Control. Cells were not fixed. Lymphocytes were gated.



1X10⁶ human PBMCs were surface stained with 5 ul CoraLite® Plus 647 Anti-Human CD3 (CL647-65151, Clone: UCHT1) (red) or Mouse IgG1 Isotype Control. Cells were not fixed. Lymphocytes were gated.