

À des fins de recherche uniquement

Anticorps Monoclonal anti-CD163

Numéro de catalogue: CL647-65169



Informations de base

Numéro de catalogue:

CL647-65169

Taille:

100 tests, 5 µl/test

Hôte:

Mouse

Isotype:

IgG1, kappa

Numéro d'acquisition GenBank:

BC051281

Identification du gène (NCBI):

9332

Nom complet:

CD163 molecule

MW calculé

1156 aa, 125 kDa

Méthode de purification:

Purification par protéine G

CloneNo.:

GHI/61

Excitation/Emission maxima
wavelengths:

654 nm / 674 nm

Applications

Applications testées:

FC

Spécificité de l'espèce:

Humain

Informations générales

CD163, also known as M130, is a membrane glycoprotein which belongs to the scavenger receptor superfamily (PMID: 8370408). It is an acute phase-regulated and signal-inducing macrophage protein expressed exclusively in monocytes and tissue macrophages (PMID: 11196644). CD163 mediates endocytosis of haptoglobin-haemoglobin complexes (PMID: 11196644). The uptake of haptoglobin by macrophages contributes to the recycling of iron and also to the inflammatory response (PMID: 22900885). Soluble CD163 (sCD163), as a result of ectodomain shedding during inflammatory activation of macrophages, circulates in blood and has been suggested as a plasma/serum marker for macrophage activity (PMID: 12570164).

Stockage

Stockage:

Store at 2-8°C. Avoid exposure to light. Stable for one year after shipment.

Tampon de stockage:

PBS avec azoture de sodium à 0,1 % et BSA à 0,5 %, pH 7,3.

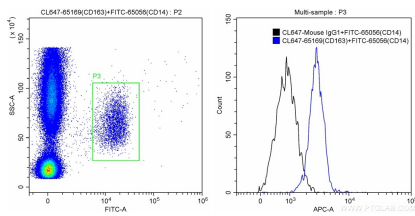
For technical support and original validation data for this product please contact:

T: 1 (888) 4PTGLAB (1-888-478-4522) (toll free
in USA), or 1(312) 455-8498 (outside USA)

E: proteintech@ptglab.com
W: ptglab.com

This product is exclusively available under Proteintech Group brand and is not available to purchase from any other manufacturer.

Données de validation sélectionnées



100 ul human peripheral blood were surface stained with 10 ul FITC-Anti-Human CD14 (FITC-65056, Clone: UCHM-1), and 5 ul CoraLite® Plus 647-conjugated Anti-Human CD163 (CL647-65169, Clone: GH1/61) or CoraLite® Plus 647-conjugated Mouse IgG1 isotype control. Cells were then treated with red blood cell lysis buffer and were gated for CD14+ monocytes for analysis of CD163 staining. Cells were not fixed.