

À des fins de recherche uniquement

# Anticorps Monoclonal anti-CD235a

Numéro de catalogue: **CL647-65174**



## Informations de base

Numéro de catalogue:

CL647-65174

Taille:

100tests , 5 µl/test

Hôte:

Mouse

Isotype:

IgG2b, kappa

Numéro d'acquisition GenBank:

BC005319

Identification du gène (NCBI):

2993

Nom complet:

glycophorin A (MNS blood group)

MW calculé

150 aa, 16 kDa

Méthode de purification:

Purification par affinité

CloneNo.:

HIR2

Excitation/Emission maxima  
wavelengths:

654 nm / 674 nm

## Applications

Applications testées:

FC

Spécificité de l'espèce:

Humain

## Informations générales

Glycophorin A (GYPA) is the major transmembrane sialoglycoprotein in erythrocytes. It is a dimeric type I transmembrane protein carrying 15 closely clustered O-linked tetrasaccharides capped with sialic acid/N-acetylneuraminic acid (Neu5Ac). This 36 kDa protein represents the major sialoglycoprotein of the red blood cell membrane displaying about one million copies per cell. (PMID: 9490702)

## Stockage

Stockage:

Store at 2-8°C. Avoid exposure to light. Stable for one year after shipment.

Tampon de stockage:

PBS with 0.09% sodium azide and 0.5% BSA.

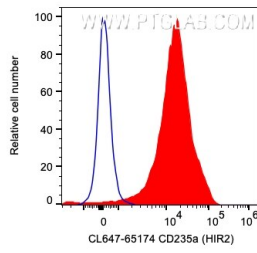
For technical support and original validation data for this product please contact:

T: 1 (888) 4PTGLAB (1-888-478-4522) (toll free  
in USA), or 1(312) 455-8498 (outside USA)

E: [proteintech@ptglab.com](mailto:proteintech@ptglab.com)  
W: [ptglab.com](http://ptglab.com)

**This product is exclusively available under Proteintech Group brand and is not available to purchase from any other manufacturer.**

## Données de validation sélectionnées



1X10<sup>6</sup> human red blood cells were surface stained with 5 ul CoraLite® Plus 647 Anti-Human CD235a (CL647-65174, Clone:HIR2) (red) or Mouse IgG2b Isotype Control. Cells were not fixed.