

À des fins de recherche uniquement

Anticorps Monoclonal anti-CD11c

Numéro de catalogue: CL647-65196



Informations de base

Numéro de catalogue:

CL647-65196

Taille:

100tests, 5 µl/test

Hôte:

Mouse

Isotype:

IgG1, kappa

Numéro d'acquisition GenBank:

BC038237

Identification du gène (NCBI):

3687

Nom complet:

integrin, alpha X (complement component 3 receptor 4 subunit)

MW calculé

1169 aa, 129 kDa

Méthode de purification:

Purification par protéine G

CloneNo.:

BU15

Excitation/Emission maxima wavelengths:

654 nm / 674 nm

Applications

Applications testées:

FC

Spécificité de l'espèce:

Humain

Informations générales

Integrins are cell adhesion receptors that are heterodimers composed of non-covalently associated α and β subunits (PMID: 9779984). CD11c, also known as integrin αX , is a type I transmembrane glycoprotein present on a variety of cells, including monocytes/macrophages, granulocytes, a subset of B cells, NK cells and dendritic cells (PMID: 2897326; 1680915; 1694698; 17389580). As a result of its high level of expression on most dendritic cells, CD11c is typically considered to be a marker of conventional dendritic cells (PMID: 27119555). CD11c forms an α/β heterodimer with CD18 (integrin $\beta 2$). CD11c/CD18 acts a receptor for fibrinogen and is important in monocyte adhesion and chemotaxis (PMID: 1671533).

Stockage

Stockage:

Store at 2-8°C. Avoid exposure to light. Stable for one year after shipment.

Tampon de stockage:

PBS avec azoture de sodium à 0,1 % et BSA à 0,5 %, pH 7,3.

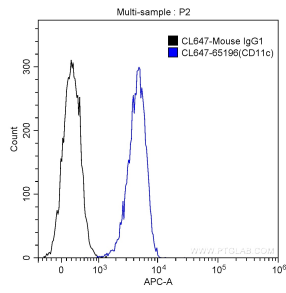
For technical support and original validation data for this product please contact:

T: 1 (888) 4PTGLAB (1-888-478-4522) (toll free in USA), or 1(312) 455-8498 (outside USA)

E: proteintech@ptglab.com
W: ptglab.com

This product is exclusively available under Proteintech Group brand and is not available to purchase from any other manufacturer.

Données de validation sélectionnées



1X10⁶ Human peripheral blood granulocytes were surface stained with 5 ul Coralite® Plus 647-conjugated Anti-Human CD11c (CL647-65196, Clone: BU15) (blue), or isotype control antibody (black). Cells were not fixed.