

À des fins de recherche uniquement

# Anticorps Monoclonal anti-CD21

Numéro de catalogue: CL647-65198



## Informations de base

Numéro de catalogue:

CL647-65198

Taille:

100 tests, 5 µl/test

Hôte:

Mouse

Isotype:

IgG1, kappa

Numéro d'acquisition GenBank:

BC136394

Identification du gène (NCBI):

1380

Nom complet:

complement component (3d/Epstein  
Barr virus) receptor 2

MW calculé

1092 aa, 119 kDa

Méthode de purification:

Purification par protéine G

CloneNo.:

BU32

Excitation/Emission maxima

wavelengths:

654 nm / 674 nm

## Applications

Applications testées:

FC

Spécificité de l'espèce:

Humain

## Informations générales

CD21, also known as complement receptor type 2 (CR2), complement C3d receptor, and Epstein-Barr virus receptor, is a transmembrane protein that contains a small cytoplasmic domain, a transmembrane region and an extracellular domain consisting of 15 tandem short consensus repeat sequences (PMID: 6230668; 2551147). It is expressed on B cells, follicular dendritic cells, thymocytes and a subset of peripheral T cells (PMID: 26119182). CD21 binds complement fragments C3d, C3dg and iC3b and acts as a receptor for the Epstein-Barr virus (PMID: 7753047). On B cells, together with CD19 and CD81, CD21 forms a complex that functions as a co-receptor to the BCR (PMID: 7542009). It is involved in B cells activation and functions.

## Stockage

Stockage:

Store at 2-8°C. Avoid exposure to light. Stable for one year after shipment.

Tampon de stockage:

PBS avec azoture de sodium à 0,1 % et BSA à 0,5 %, pH 7,3.

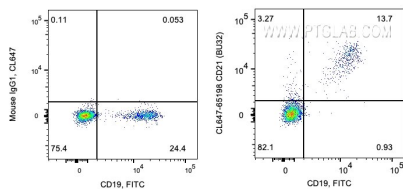
For technical support and original validation data for this product please contact:

T: 1 (888) 4PTGLAB (1-888-478-4522) (toll free  
in USA), or 1(312) 455-8498 (outside USA)

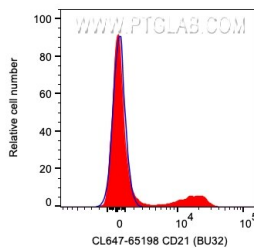
E: [proteintech@ptglab.com](mailto:proteintech@ptglab.com)  
W: [ptglab.com](http://ptglab.com)

This product is exclusively available under Proteintech Group brand and is not available to purchase from any other manufacturer.

## Données de validation sélectionnées



1X10<sup>6</sup> human PBMCs were surface co-stained with FITC-CD19 and 5 ul CoraLite® Plus 647 Anti-Human CD21 (CL647-65198, Clone: BU32), or APC Mouse IgG1 Isotype Control (APC-65124, Clone: MOPC-21). Cells were not fixed. Lymphocytes were gated.



1X10<sup>6</sup> human PBMCs were surface stained with 5 ul CoraLite® Plus 647 Anti-Human CD21 (CL647-65198, Clone: BU32), or APC Mouse IgG1 Isotype Control (APC-65124, Clone: MOPC-21). Cells were not fixed. Lymphocytes were gated.