

À des fins de recherche uniquement

# Anticorps Monoclonal anti-CD68

Numéro de catalogue: **CL647-65202**



## Informations de base

Numéro de catalogue:  
CL647-65202

Taille:  
100tests , 5 µl/test

Hôte:  
Mouse

Isotype:  
IgG1, kappa

Numéro d'acquisition GenBank:  
BC015557

Identification du gène (NCBI):  
968

Nom complet:  
CD68 molecule

MW calculé  
37 kDa

Méthode de purification:  
Purification par protéine G

CloneNo.:  
KP1

Excitation/Emission maxima  
wavelengths:  
654 nm / 674 nm

## Applications

Applications testées:  
FC (Intra)

Spécificité de l'espèce:  
Humain

## Informations générales

CD68 is a type I transmembrane glycoprotein that is highly expressed by human monocytes and tissue macrophages. It belongs to the lysosomal/endosomal-associated membrane glycoprotein (LAMP) family and primarily localizes to lysosomes and endosomes with a smaller fraction circulating to the cell surface. CD68 is also a member of the scavenger receptor family. It may play a role in phagocytic activities of tissue macrophages.

## Stockage

Stockage:

Store at 2-8°C. Avoid exposure to light. Stable for one year after shipment.

Tampon de stockage:

PBS avec azoture de sodium à 0,1 % et BSA à 0,5 %, pH 7,3.

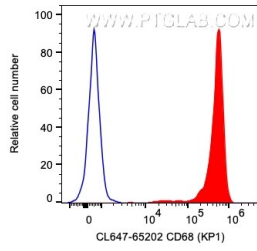
For technical support and original validation data for this product please contact:

T: 1 (888) 4PTGLAB (1-888-478-4522) (toll free  
in USA), or 1(312) 455-8498 (outside USA)

E: [proteintech@ptglab.com](mailto:proteintech@ptglab.com)  
W: [ptglab.com](http://ptglab.com)

**This product is exclusively available under Proteintech Group brand and is not available to purchase from any other manufacturer.**

## Données de validation sélectionnées



1X10<sup>6</sup> human PBMCs were intracellularly stained with 5  $\mu$ l CoraLite® Plus 647 Anti-Human CD68 (CL647-65202, Clone: KP1), or Mouse IgG1 Isotype Control. Cells were fixed and permeabilized with Transcription Factor Staining Buffer. Monocytes were gated.