

À des fins de recherche uniquement

Anticorps Monoclonal anti-LRP1

Numéro de catalogue: **CL647-65233**



Informations de base

Numéro de catalogue:

CL647-65233

Taille:

100tests , 5 µl/test

Hôte:

Mouse

Isotype:

IgG2b

Numéro d'acquisition GenBank:

BC045107

Identification du gène (NCBI):

4035

Nom complet:

low density lipoprotein-related protein 1 (alpha-2-macroglobulin receptor)

MW calculé

505 kDa

Méthode de purification:

Purification par affinité

CloneNo.:

5A6

Excitation/Emission maxima wavelengths:

654 nm / 674 nm

Applications

Applications testées:

FC

Spécificité de l'espèce:

Humain

Informations générales

Stockage

Stockage:

Store at 2-8°C. Avoid exposure to light. Stable for one year after shipment.

Tampon de stockage:

PBS with 0.09% sodium azide.

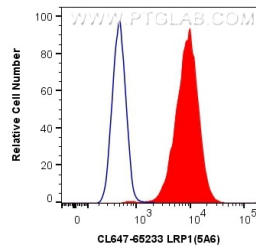
For technical support and original validation data for this product please contact:

T: 1 (888) 4PTGLAB (1-888-478-4522) (toll free in USA), or 1(312) 455-8498 (outside USA)

E: proteintech@ptglab.com
W: ptglab.com

This product is exclusively available under Proteintech Group brand and is not available to purchase from any other manufacturer.

Données de validation sélectionnées



1X10⁶ U-87 MG cells were surface stained with 5 μ l CoraLite® Plus 647 Anti-Human LRP1 (CL647-65233, Clone:5A6) (red) or Control Antibody. Cells were not fixed.