

À des fins de recherche uniquement

Anticorps Monoclonal anti-IgM Isotype Control



Numéro de catalogue: **CL647-65243**

Informations de base

Numéro de catalogue:

CL647-65243

Taille:

100ug , 200 µg/ml

Hôte:

Mouse

Isotype:

IgM, lambda

Numéro d'acquisition GenBank:

Identification du gène (NCBI):

Nom complet:

Méthode de purification:

N/A

CloneNo.:

MOPC-104E

Excitation/Emission maxima
wavelengths:

654 nm / 674 nm

Applications

Applications testées:

FC

Spécificité de l'espèce:

Informations générales

Stockage

Stockage:

Store at 2-8°C. Avoid exposure to light. Stable for one year after shipment.

Tampon de stockage:

PBS with 0.09% sodium azide and 0.5% BSA.

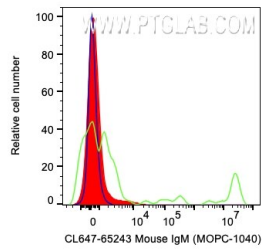
For technical support and original validation data for this product please contact:

T: 1 (888) 4PTGLAB (1-888-478-4522) (toll free
in USA), or 1(312) 455-8498 (outside USA)

E: proteintech@ptglab.com
W: ptglab.com

This product is exclusively available under Proteintech Group brand and is not available to purchase from any other manufacturer.

Données de validation sélectionnées



1X10⁶ human whole blood cells were surface stained with 0.2 ug CoraLite® Plus 647 Anti-Mouse IgM Isotype Control (red), CoraLite 650 Plus Anti-Human STRO-1 (green), or unstained (blue). Cells were not fixed.