

À des fins de recherche uniquement

Anticorps Monoclonal anti-MCL1

Numéro de catalogue: **CL647-66026** **Phare**



Informations de base

Numéro de catalogue: CL647-66026	Numéro d'acquisition GenBank: BC107735	Méthode de purification: Purification par protéine A
Taille: 100ul , Concentration: 1000 µg/ml by Nanodrop;	Identification du gène (NCBI): 4170	CloneNo.: 1E3C2
Hôte: Mouse	Nom complet: myeloid cell leukemia sequence 1 (BCL2-related)	Excitation/Emission maxima wavelengths: 654 nm / 674 nm
Isotype: IgG2b	MW calculé 350 aa, 37 kDa	
Immunogen Catalog Number: AG10609		

Applications

Applications testées:
FC (Intra)
Spécificité de l'espèce:
Humain

Informations générales

MCL-1 is an anti-apoptotic member of the Bcl-2 family originally isolated from the ML-1 human myeloid leukemia cell line. Similar to BCL2 and BCL2L1, MCL1 can interact with BAX and/or BAK1 to inhibit mitochondria-mediated apoptosis. Mcl-1 is critical for the proliferation and survival of myeloma cells in vitro, and overexpression of Mcl-1 protein in myeloma cells is associated with relapse and short event-free survival in multiple myeloma patients. Recent studies show that MCL-1 is upregulated in numerous haematological and solid tumour malignancies. Therefore, MCL-1 has been suggested as a potential new therapeutic target.

Stockage

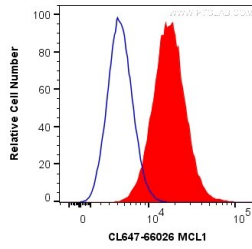
Stockage:
Stocker à -20 °C. Éviter toute exposition à la lumière. Stable pendant un an après l'expédition.
Tampon de stockage:
PBS avec glycérol à 50 %, Proclin300 à 0,05 % et BSA à 0,5 %, pH 7,3.
L'aliquotage n'est pas nécessaire pour le stockage à -20C

***** Les 20ul contiennent 0,1% de BSA.**

For technical support and original validation data for this product please contact:
T: 1 (888) 4PTGLAB (1-888-478-4522) (toll free in USA), or 1(312) 455-8498 (outside USA) E: proteintech@ptglab.com
W: ptglab.com

This product is exclusively available under Proteintech Group brand and is not available to purchase from any other manufacturer.

Données de validation sélectionnées



1X10⁶ HeLa cells were intracellularly stained with 0.2 ug Coralite® Plus 647 Anti-Human MCL1 (CL647-66026, Clone:1E3C2) (red), or 0.2 ug Control Antibody (blue). Cells were fixed with 4% PFA.