

À des fins de recherche uniquement

Anticorps Monoclonal anti-APOL1-Specific



Numéro de catalogue: **CL647-66124**

Informations de base

Numéro de catalogue: CL647-66124	Numéro d'acquisition GenBank: BC017331	Méthode de purification: Purification par protéine A
Taille: 100ul , Concentration: 1000 µg/ml by Nanodrop;	Identification du gène (NCBI): 8542	CloneNo.: 1G12D11
Hôte: Mouse	Nom complet: apolipoprotein L, 1	Dilutions recommandées: IF 1:50-1:500
Isotype: IgG2a	MW calculé 44 kDa	Excitation/Emission maxima wavelengths: 654 nm / 674 nm
Immunogen Catalog Number: AG2016		

Applications

Applications testées: FC (Intra), IF	Contrôles positifs: IF : tissu hépatique humain,
Spécificité de l'espèce: Humain	

Informations générales

Human apolipo-protein L1 (APOL1) is a minor component of plasma high density lipoprotein (HDL) particles, acting as an interacting protein of apolipoprotein A1 (ApoA1). The human ApoL protein family was thought to be predominantly involved in lipid transport and metabolism. APOL1 is also involved in host innate immunity against Trypanosoma parasites. Once activated, APOL1 can lyse the parasite and protect human from infection. Genetic variants in APOL1 gene, which are found in African ancestry with high frequency, associate with chronic kidney disease, like focal segmental glomerulosclerosis (FSGS), HIV-associated nephropathy (HIVAN), and hypertensive nephropathy. APOL1 share structural and functional similarities with proteins of the Bcl-2 family and may has roles in apoptosis and autophagy. It is notable that APOL1 exists only in human and a few other primate species, and mouse does not express an APOL1 orthologue. This antibody is conjugated with CL647, Ex/Em 650 nm/665 nm.

Stockage

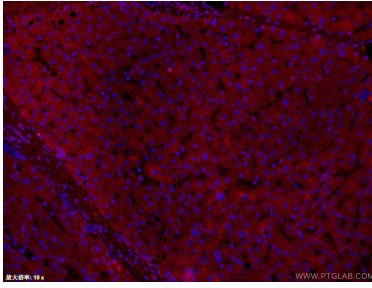
Stockage:
Stocker à -20 °C. Éviter toute exposition à la lumière. Stable pendant un an après l'expédition.
Tampon de stockage:
PBS avec glycérol à 50 %, Proclin300 à 0,05 % et BSA à 0,5 %, pH 7,3.
L'aliquotage n'est pas nécessaire pour le stockage à -20C

***** Les 20ul contiennent 0,1% de BSA.**

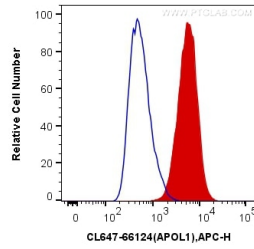
For technical support and original validation data for this product please contact:
T: 1 (888) 4PTGLAB (1-888-478-4522) (toll free in USA), or 1(312) 455-8498 (outside USA)
E: proteintech@ptglab.com
W: ptglab.com

This product is exclusively available under Proteintech Group brand and is not available to purchase from any other manufacturer.

Données de validation sélectionnées



Immunofluorescent analysis of (4% PFA) fixed human liver tissue using CL647-66124 (APOL1-Specific antibody) at dilution of 1:50.



1X10⁶ HepG2 cells were intracellularly stained with 0.4 ug Coralite® Plus 647 Anti-Human APOL1-Specific (CL647-66124, Clone:1G12D11) (red), or 0.4 ug Control Antibody. Cells were fixed with 4% PFA and permeabilized with Flow Cytometry Perm Buffer (PF00011-C).