

À des fins de recherche uniquement

Anticorps Monoclonal anti-Mouse IgG2a isotype control



Numéro de catalogue: CL647-66360-2

Informations de base

Numéro de catalogue:
CL647-66360-2

Taille:
100ug, Concentration: 200 µg/ml by
Nanodrop;

Hôte:
Mouse

Isotype:
IgG2a

Numéro d'acquisition GenBank:
Identification du gène (NCBI):

Nom complet:

Méthode de purification:
Purification par protéine A

CloneNo.:
11A1B2

Excitation/Emission maxima
wavelengths:
654 nm / 674 nm

Applications

Applications testées:
FC

Spécificité de l'espèce:
Megathura crenulata

Informations générales

This antibody is used as the isotype control of mouse IgG2a. It can be used as the isotype control in Flow Cytometry and other experiments. The immunogen of this antibody is Keyhole Limpet Hemocyanin (KLH).

0.05-0.2 ug per test is suggested for FC experiment.

Stockage

Stockage:

Store at 2-8°C. Avoid exposure to light. Stable for one year after shipment.

Tampon de stockage:

PBS with 0.09% sodium azide and 0.5% BSA.

*** Les 20ul contiennent 0,1% de BSA.

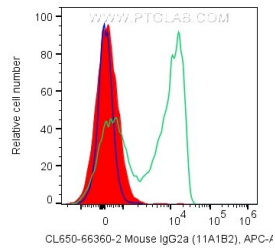
For technical support and original validation data for this product please contact:

T: 1 (888) 4PTGLAB (1-888-478-4522) (toll free
in USA), or 1(312) 455-8498 (outside USA)

E: proteintech@ptglab.com
W: ptglab.com

This product is exclusively available under Proteintech Group brand and is not available to purchase from any other manufacturer.

Données de validation sélectionnées



1X10⁶ human PBMCs were surface stained with 0.2 ug CoraLite® Plus 647 Mouse IgG2a isotype control (CL647-66360-2, Clone: 11A1B2) (filled red), 5 ul CoraLite® Plus 647 Anti-Human CD5 (green), or unstained (blue). Cells were not fixed. Lymphocytes were gated.