

À des fins de recherche uniquement

Anticorps Monoclonal anti-Bcl2

Numéro de catalogue: **CL647-66799**



Informations de base

Numéro de catalogue: CL647-66799	Numéro d'acquisition GenBank: NM-009741	Méthode de purification: Purification par protéine G
Taille: 100ul , Concentration: 1000 µg/ml by Nanodrop;	Identification du gène (NCBI): 12043	CloneNo.: 1B5B9
Hôte: Mouse	Nom complet: B-cell leukemia/lymphoma 2	Excitation/Emission maxima wavelengths: 654 nm / 674 nm
Isotype: IgG1	MW calculé 26 kDa	
Immunogen Catalog Number: AG24261	MW observés: 26 kDa	

Applications

Applications testées:
FC (Intra)
Spécificité de l'espèce:
souris

Informations générales

Bcl2 is a member of the B cell lymphoma 2 protein family. Members of this family regulate cell death in multiple cell types and can have either proapoptotic or antiapoptotic activities. The protein encoded by this gene inhibits mitochondrial-mediated apoptosis. This protein is an integral outer mitochondrial membrane protein that functions as part of signaling pathway that controls mitochondrial permeability in response to apoptotic stimuli. This protein may also play a role in neuron cell survival and autophagy. Abnormal expression and chromosomal translocations of this gene are associated with cancer progression in numerous tissues.

Stockage

Stockage:
Stocker à -20 °C. Éviter toute exposition à la lumière. Stable pendant un an après l'expédition.
Tampon de stockage:
PBS avec glycérol à 50 %, Proclin300 à 0,05 % et BSA à 0,5 %, pH 7,3.
L'aliquotage n'est pas nécessaire pour le stockage à -20C

***** Les 20ul contiennent 0,1% de BSA.**

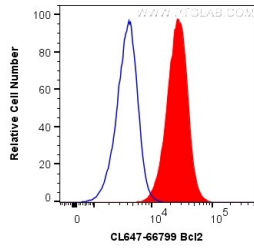
For technical support and original validation data for this product please contact:

T: 1 (888) 4PTGLAB (1-888-478-4522) (toll free
in USA), or 1(312) 455-8498 (outside USA)

E: proteintech@ptglab.com
W: ptglab.com

This product is exclusively available under Proteintech Group brand and is not available to purchase from any other manufacturer.

Données de validation sélectionnées



1X10⁶ NIH/3T3 cells were intracellularly stained with 0.2 ug CoraLite® Plus 647 Anti-Mouse Bcl2 (CL647-66799, Clone:1B5B9) (red), or 0.2 ug APC-65128 ; APC Mouse IgG2b Isotype Control (APC-65128, Clone: MPC-11) (blue). Cells were fixed with 4% PFA and permeabilized with Flow Cytometry Perm Buffer (PF00011-C).