

À des fins de recherche uniquement

Anticorps Monoclonal anti-NCAPH

Numéro de catalogue: CL647-67655



Informations de base

Numéro de catalogue: CL647-67655	Numéro d'acquisition GenBank: BC024211	Méthode de purification: Purification par protéine G
Taille: 100ul, Concentration: 1000 µg/ml by Nanodrop;	Identification du gène (NCBI): 23397	CloneNo.: 3D2F11
Hôte: Mouse	Nom complet: non-SMC condensin I complex, subunit H	Dilutions recommandées: IF 1:50-1:500
Isotype: IgG1	MW calculé 741 aa, 83 kDa	Excitation/Emission maxima wavelengths: 654 nm / 674 nm
Immunogen Catalog Number: AG27748		

Applications

Applications testées: IF	Contrôles positifs: IF : tissu de cancer du foie humain,
Spécificité de l'espèce: Humain	

Informations générales

Non-SMC condensin I complex subunit H (NCAPH) is one of the three non-SMC subunits in condensin I, which belongs to a recently defined superfamily of proteins termed kleisins. Another two non-SMC subunits, CAP-D2 and CAP-G, share a highly degenerate repeating motif known as HEAT repeat. Some studies show that each subunit is essential for viability and plays an important role in mitotic chromosome architecture and segregation. In recent years, researchers found that the high expression of NCAPH was associated with poor prognosis in patients with non-small cell lung cancer and prostate cancer. Downregulation of NCAPH inhibited the proliferation, migration, and invasion of several cancer cells significantly. Moreover, NCAPH was involved in the regulation of mature chromosome condensation and DNA damage. These data suggest that NCAPH may be a key carcinogen involved in the development and progression of human malignant tumors. (PMID: 28300828, PMID: 33311486)

Stockage

Stockage:
Stocker à -20 °C. Éviter toute exposition à la lumière.
Tampon de stockage:
PBS avec glycérol à 50 %, Proclin300 à 0,05 % et BSA à 0,5 %, pH 7,3.
L'aliquotage n'est pas nécessaire pour le stockage à -20C

***** Les 20ul contiennent 0,1% de BSA.**

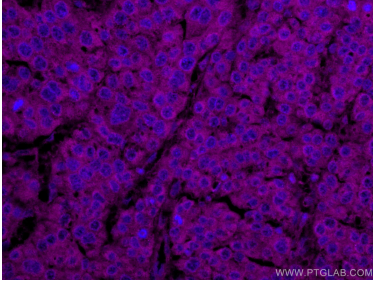
For technical support and original validation data for this product please contact:

T: 1 (888) 4PTGLAB (1-888-478-4522) (toll free
in USA), or 1(312) 455-8498 (outside USA)

E: proteintech@ptglab.com
W: ptglab.com

This product is exclusively available under Proteintech Group brand and is not available to purchase from any other manufacturer.

Données de validation sélectionnées



Immunofluorescent analysis of (4% PFA) fixed human liver cancer tissue using CoraLite® Plus 647 NCAPH antibody (CL647-67655, Clone: 3D2F11) at dilution of 1:200.