

À des fins de recherche uniquement

Anticorps Monoclonal anti-Cyclin B2

Numéro de catalogue: **CL647-67726**



Informations de base

Numéro de catalogue: CL647-67726	Numéro d'acquisition GenBank: BC105086	Méthode de purification: Purification par protéine A
Taille: 100ul, Concentration: 1000 µg/ml by Nanodrop;	Identification du gène (NCBI): 9133	CloneNo.: 2G8B7
Hôte: Mouse	Nom complet: cyclin B2	Dilutions recommandées: IF 1:50-1:500
Isotype: IgG2a	MW calculé 398 aa, 45 kDa	Excitation/Emission maxima wavelengths: 654 nm / 674 nm
Immunogen Catalog Number: AG16329		

Applications

Applications testées: IF	Contrôles positifs: IF : tissu testiculaire de souris,
Spécificité de l'espèce: Humain, souris	

Informations générales

Cyclin B2 (CCNB2) is a member of cyclin family proteins, which regulate the activities of cyclin dependent kinases (CDKs) and different cyclins function spatially and temporally in specific phases of the cell cycle. Cyclin B2 serves a key role in progression of G2/M transition. Cyclin B2 has been found to be up-regulated in a variety of human cancers, such as adrenocortical carcinoma, breast carcinoma, colorectal adenocarcinoma, pituitary adenoma and gastric cancer. The aberrant expression of Cyclin B2 deregulates spindle checkpoints in the cell cycle and results in chromosomal instability (CIN), one of the signature phenotypes of most cancers. Moreover, serum circulating Cyclin B2 mRNA expression has been found increased in cancer patients and associated with cancer stage and metastasis status.

Stockage

Stockage:
Stocker à -20 °C. Éviter toute exposition à la lumière.
Tampon de stockage:
PBS avec glycérol à 50 %, Proclin300 à 0,05 % et BSA à 0,5 %, pH 7,3.
L'aliquotage n'est pas nécessaire pour le stockage à -20C

***** Les 20ul contiennent 0,1% de BSA.**

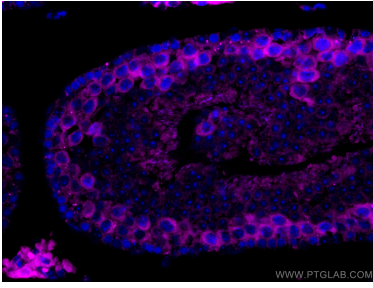
For technical support and original validation data for this product please contact:

T: 1 (888) 4PTGLAB (1-888-478-4522) (toll free
in USA), or 1(312) 455-8498 (outside USA)

E: proteintech@ptglab.com
W: ptglab.com

This product is exclusively available under Proteintech Group brand and is not available to purchase from any other manufacturer.

Données de validation sélectionnées



Immunofluorescent analysis of (4% PFA) fixed mouse testis tissue using CoraLite® Plus 647 Cyclin B2 antibody (CL647-67726, Clone: 2G8B7) at dilution of 1:200.