

À des fins de recherche uniquement

Anticorps Monoclonal anti-smooth muscle actin specific



Numéro de catalogue: CL647-67735

1 Publications

Informations de base

Numéro de catalogue: CL647-67735	Numéro d'acquisition GenBank: NM_001613	Méthode de purification: Purification par protéine G
Taille: 100ul , Concentration: 1000 µg/ml by 59 Nanodrop;	Identification du gène (NCBI): 59	CloneNo.: 1E9A11
Hôte: Mouse	Nom complet: actin, alpha 2, smooth muscle, aorta	Dilutions recommandées: IF 1:50-1:500
Isotype: IgG1	MW calculé: 42 kDa	Excitation/Emission maxima wavelengths: 654 nm / 674 nm
	MW observés: 42 kDa	

Applications

Applications testées:

FC (Intra), IF

Demandes citées:

FC

Spécificité de l'espèce:

Humain, porc, rat, souris

Espèces citées:

souris

Contrôles positifs:

IF : tissu cardiaque de souris,

Informations générales

ACTA2 (also known as α -smooth muscle actin or α -SMA) belongs to the actin family. Actins are highly conserved proteins that are involved in various types of cell motility and are ubiquitously expressed in all eukaryotic cells. ACTA2 is primarily expressed in vascular smooth muscle and anti-ACTA2 is commonly used to marker smooth muscle cells.

Publications notables

Autrice	Pubmed ID	Journal	Application
Chuxiang Lei	37660071	Nat Commun	FC

Stockage

Stockage:

Stocker à -20°C. Éviter toute exposition à la lumière.

Tampon de stockage:

PBS avec glycérol à 50 %, Proclin300 à 0,05 % et BSA à 0,5 %, pH 7,3.

L'aliquotage n'est pas nécessaire pour le stockage à -20C

*** Les 20ul contiennent 0,1% de BSA.

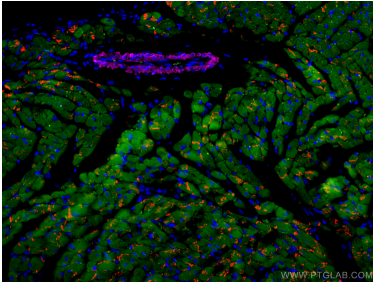
For technical support and original validation data for this product please contact:

T: 1 (888) 4PTGLAB (1-888-478-4522) (toll free in USA), or 1(312) 455-8498 (outside USA)

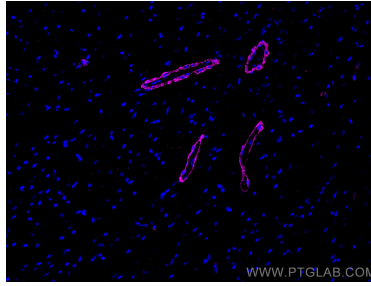
E: proteintech@ptglab.com
W: ptglab.com

This product is exclusively available under Proteintech Group brand and is not available to purchase from any other manufacturer.

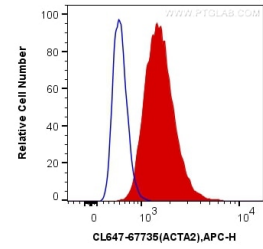
Données de validation sélectionnées



Immunofluorescent analysis of (4% PFA) fixed mouse heart tissue using CoraLite® Plus 647 smooth muscle actin specific antibody (CL647-67735, Clone: 1E9A11) at dilution of 1:100, CoraLite®488 Cardiac Troponin I antibody (CL488-66376, Clone: 1D5D6, green), CoraLite®594 N-cadherin antibody (CL594-22018, red). DAPI (blue).



Immunofluorescent analysis of (4% PFA) fixed mouse heart tissue using CoraLite® Plus 647 smooth muscle actin specific antibody (CL647-67735, Clone: 1E9A11) at dilution of 1:200.



1X10⁶ C2C12 cells were intracellularly stained with 0.4 ug CoraLite® Plus 647 Anti-Human smooth muscle actin specific (CL647-67735, Clone:1E9A11) (red), or 0.4 ug Control Antibody. Cells were fixed with 4% PFA and permeabilized with Flow Cytometry Perm Buffer (PF00011-C).