

À des fins de recherche uniquement

Anticorps Monoclonal anti-EIF4A3

Numéro de catalogue: CL647-67740



Informations de base

Numéro de catalogue: CL647-67740	Numéro d'acquisition GenBank: BC003662	Méthode de purification: Purification par protéine A
Taille: 100ul, Concentration: 1000 µg/ml by Nanodrop;	Identification du gène (NCBI): 9775	CloneNo.: 1G6H9
Hôte: Mouse	Nom complet: eukaryotic translation initiation factor 4A, isoform 3	Dilutions recommandées: IF 1:50-1:500
Isotype: IgG2b	MW calculé 47 kDa	Excitation/Emission maxima wavelengths: 654 nm / 674 nm
Immunogen Catalog Number: AG11130	MW observés: 47 kDa	

Applications

Applications testées: IF	Contrôles positifs: IF : cellules HepG2,
Spécificité de l'espèce: Humain, souris	

Informations générales

EIF4A3 is a component of the exon junction complex (EJC), which assembles near exon-exon junctions of mRNAs as a result of splicing. EJC proteins involves in postslicing events, including mRNA export, cytoplasmic localization, and nonsense-mediated decay. Its RNA-dependent ATPase and RNA-helicase activities are induced by CASC3, but abolished in presence of the MAGOH/RBM8A heterodimer, thereby trapping the ATP-bound EJC core onto spliced mRNA in a stable conformation. Besides, it involved in translational enhancement of spliced mRNAs after formation of the 80S ribosome complex and binds spliced mRNA in sequence-independent manner, 20-24 nucleotides upstream of mRNA exon-exon junctions

Stockage

Stockage:
Stocker à -20 °C. Éviter toute exposition à la lumière.
Tampon de stockage:
PBS avec glycérol à 50 %, Proclin300 à 0,05 % et BSA à 0,5 %, pH 7,3.
L'aliquotage n'est pas nécessaire pour le stockage à -20C

***** Les 20ul contiennent 0,1% de BSA.**

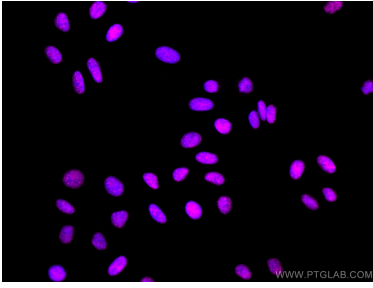
For technical support and original validation data for this product please contact:

T: 1 (888) 4PTGLAB (1-888-478-4522) (toll free
in USA), or 1(312) 455-8498 (outside USA)

E: proteintech@ptglab.com
W: ptglab.com

This product is exclusively available under Proteintech Group brand and is not available to purchase from any other manufacturer.

Données de validation sélectionnées



Immunofluorescent analysis of (4% PFA) fixed HepG2 cells using CoraLite® Plus 647 EIF4A3 antibody (CL647-67740, Clone: 1G6H9) at dilution of 1:200.