

À des fins de recherche uniquement

Anticorps Monoclonal anti-MFGE8

Numéro de catalogue: **CL647-67797**



Informations de base

Numéro de catalogue: CL647-67797	Numéro d'acquisition GenBank: BC003610	Méthode de purification: Purification par protéine A
Taille: 100ul , Concentration: 1000 µg/ml by Nanodrop;	Identification du gène (NCBI): 4240	CloneNo.: 1A1A9
Hôte: Mouse	Nom complet: milk fat globule-EGF factor 8 protein	Excitation/Emission maxima wavelengths: 654 nm / 674 nm
Isotype: IgG2b	MW calculé 43 kDa	
Immunogen Catalog Number: AG30666	MW observés: 43 kDa	

Applications

Applications testées:
FC (Intra)
Spécificité de l'espèce:
Humain

Informations générales

Milk fat globule-epidermal growth factor-factor 8 (MFG-E8), also known as lactadherin, is a multifunctional secreted glycoprotein exhibiting versatile functions in cell physiology affecting health and diseases. It plays roles in clearance of apoptotic cells, anti-inflammatory, wound healing, arterial remodeling, angiogenesis, enhancing tumorigenicity and cancer metastasis (PMID: 23972256). MFG-E8 consists of two-repeated EGF-like domains, a mucin-like domain and two-repeated discoidin-like domains (C-domains), and contains an integrin-binding motif (RGD sequence) in the EGF-like domain (PMID: 11856354). It shows ubiquitous pattern of expression in various types of cells and tissues. Altered expression of MFG-E8 causes disruptions of homeostasis and is correlated with a number of diseases (PMID: 27429513).

Stockage

Stockage:
Stocker à -20 °C. Éviter toute exposition à la lumière. Stable pendant un an après l'expédition.
Tampon de stockage:
PBS avec glycérol à 50 %, Proclin300 à 0,05 % et BSA à 0,5 %, pH 7,3.
L'aliquotage n'est pas nécessaire pour le stockage à -20C

***** Les 20ul contiennent 0,1% de BSA.**

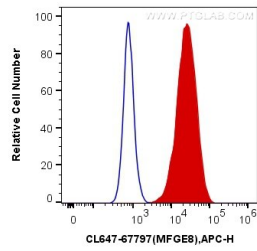
For technical support and original validation data for this product please contact:

T: 1 (888) 4PTGLAB (1-888-478-4522) (toll free
in USA), or 1(312) 455-8498 (outside USA)

E: proteintech@ptglab.com
W: ptglab.com

This product is exclusively available under Proteintech Group brand and is not available to purchase from any other manufacturer.

Données de validation sélectionnées



1X10⁶ MDA-MB-231 cells were intracellularly stained with 0.4 ug CoraLite® Plus 647 Anti-Human MFGE8 (CL647-67797, Clone:1A1A9) (red), or 0.4 ug Control Antibody. Cells were fixed with 4% PFA and permeabilized with Flow Cytometry Perm Buffer (PF00011-C).