

À des fins de recherche uniquement

# Anticorps Monoclonal anti-IL-6

Numéro de catalogue: **CL647-69001**



## Informations de base

<b>Numéro de catalogue:</b> CL647-69001	<b>Numéro d'acquisition GenBank:</b> 3569	<b>Méthode de purification:</b> Purification par protéine G
<b>Taille:</b> 100ul , Concentration: 1000 µg/ml by Nanodrop;	<b>Identification du gène (NCBI):</b> interleukin 6 (interferon, beta 2)	<b>CloneNo.:</b> 4G3E6
<b>Hôte:</b> Mouse	<b>Nom complet:</b> interleukin 6 (interferon, beta 2)	<b>Excitation/Emission maxima wavelengths:</b> 654 nm / 674 nm
<b>Isotype:</b> IgG1		
<b>Immunogen Catalog Number:</b> HZ-1019		

## Applications

**Applications testées:**  
FC (Intra)

**Spécificité de l'espèce:**  
Humain

## Informations générales

Interleukin-6 (IL-6) is an interleukin that acts as both a pro-inflammatory and anti-inflammatory cytokine. IL-6 protein is secreted by a variety of cell types including T cells and macrophages as phosphorylated and variably glycosylated molecule. IL-6 plays an essential role in the final differentiation of B-cells into Ig-secreting cells involved in lymphocyte and monocyte differentiation. It induces myeloma and plasmacytoma growth and induces nerve cells differentiation Acts on B-cells, T-cells, hepatocytes, hematopoietic progenitor cells and cells of the CNS. IL-6 is also considered a myokine, a cytokine produced from muscle, and is elevated in response to muscle contraction. IL-6 has been shown to interact with interleukin-6 receptor and glycoprotein 130. Additionally, IL-6 is involved in hematopoiesis, bone metabolism, and cancer progression, and has been defined an essential role in directing transition from innate to acquired immunity.

This antibody is used to Block/Neutralize IL6 protein.

## Stockage

**Stockage:**  
Stocker à -20 °C. Éviter toute exposition à la lumière.

**Tampon de stockage:**  
PBS avec glycérol à 50 %, Proclin300 à 0,05 % et BSA à 0,5 %, pH 7,3.  
L'aliquotage n'est pas nécessaire pour le stockage à -20C

**\*\*\* Les 20ul contiennent 0,1% de BSA.**

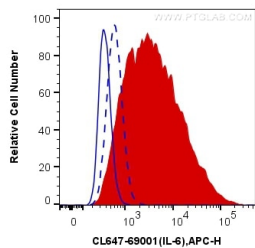
For technical support and original validation data for this product please contact:

T: 1 (888) 4PTGLAB (1-888-478-4522) (toll free in USA), or 1(312) 455-8498 (outside USA)

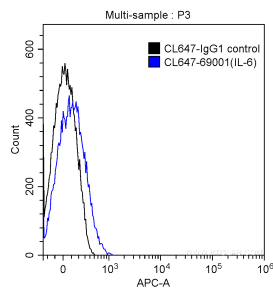
E: [proteintech@ptglab.com](mailto:proteintech@ptglab.com)  
W: [ptglab.com](http://ptglab.com)

**This product is exclusively available under Proteintech Group brand and is not available to purchase from any other manufacturer.**

## Données de validation sélectionnées



1X10<sup>6</sup> HUVEC cells untreated (dashed lines) or treated with LPS and Brefeldin A (red) were intracellularly stained with 0.25 ug CoraLite® Plus 647 Anti-Human IL-6 (CL647-69001, Clone:4G3E6), or 0.25 ug Control Antibody (blue). Cells were fixed with 4% PFA and permeabilized with Flow Cytometry Perm Buffer (PF00011-C).



1X10<sup>6</sup> HT-1080 cells were treated with fixation and permeabilization reagents and intracellularly stained with 0.5 ug CoraLite® Plus 647 Anti-Human IL-6 (CL647-69001, Clone:4G3E6) (blue), and 0.5 ug Control Antibody.