

À des fins de recherche uniquement

# Anticorps Recombinant de lapin anti-smooth muscle actin specific



Numéro de catalogue: **CL647-80008**

## Informations de base

Numéro de catalogue: CL647-80008	Numéro d'acquisition GenBank: NM_001613	Méthode de purification: Purification par protéine A
Taille: 100ul , Concentration: 1000 µg/ml by Nanodrop;	Identification du gène (NCBI): 59	CloneNo.: 5H7
Hôte: Lapin	Nom complet: actin, alpha 2, smooth muscle, aorta	Dilutions recommandées: IF 1:50-1:500
Isotype: IgG	MW calculé 42 kDa	Excitation/Emission maxima wavelengths: 654 nm / 674 nm

## Applications

Applications testées: IF	Contrôles positifs: IF : tissu d'intestin grêle de souris,
Spécificité de l'espèce: souris	

## Informations générales

ACTA2 (also known as  $\alpha$ -smooth muscle actin or  $\alpha$ -SMA) belongs to the actin family. Actins are highly conserved proteins that are involved in various types of cell motility and are ubiquitously expressed in all eukaryotic cells. ACTA2 is primarily expressed in vascular smooth muscle and anti-ACTA2 is commonly used to marker smooth muscle cells.

## Stockage

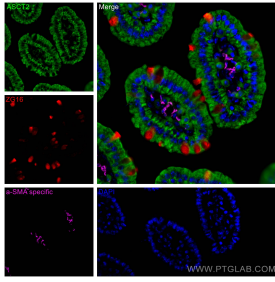
**Stockage:**  
Stocker à -20 °C. Éviter toute exposition à la lumière. Stable pendant un an après l'expédition.  
**Tampon de stockage:**  
PBS avec glycérol à 50 %, Proclin300 à 0,05 % et BSA à 0,5 %, pH 7,3.  
L'aliquotage n'est pas nécessaire pour le stockage à -20C

**\*\*\* Les 20ul contiennent 0,1% de BSA.**

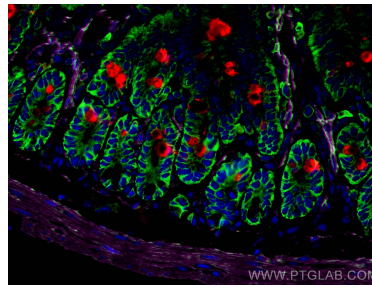
For technical support and original validation data for this product please contact:  
T: 1 (888) 4PTGLAB (1-888-478-4522) (toll free in USA), or 1(312) 455-8498 (outside USA) E: [proteintech@ptglab.com](mailto:proteintech@ptglab.com) W: [ptglab.com](http://ptglab.com)

This product is exclusively available under Proteintech Group brand and is not available to purchase from any other manufacturer.

## Données de validation sélectionnées



Immunofluorescent analysis of (4% PFA) fixed mouse small intestine tissue using CoraLite® Plus 647 smooth muscle actin specific antibody (CL647-80008, Clone: 5H7 ) at dilution of 1:200, ZG16 antibody (67389-1-Ig, Clone: 1A7B9, red), ASCT2 antibody (20350-1-AP, green).



Immunofluorescent analysis of (4% PFA) fixed mouse small intestine tissue using CoraLite® Plus 647 smooth muscle actin specific antibody (CL647-80008, Clone: 5H7 ) at dilution of 1:200, ZG16 antibody (67389-1-Ig, Clone: 1A7B9, red), ASCT2 antibody (20350-1-AP, green).