

À des fins de recherche uniquement

Anticorps Recombinant de lapin anti-Phospho-RPS6KA1 (Ser380)



Numéro de catalogue: **CL647-80108**

Informations de base

Numéro de catalogue: CL647-80108	Numéro d'acquisition GenBank: BC014966	Méthode de purification: Purification par protéine A
Taille: 100ul , Concentration: 1000 µg/ml by Nanodrop;	Identification du gène (NCBI): 6195	CloneNo.: 7F23
Hôte: Lapin	Nom complet: ribosomal protein S6 kinase, 90kDa, polypeptide 1	Excitation/Emission maxima wavelengths: 654 nm / 674 nm
Isotype: IgG	MW calculé: 735 aa, 83 kDa	
	MW observés: 83-90 kDa	

Applications

Applications testées:
FC (Intra)

Spécificité de l'espèce:
Humain, souris

Informations générales

The 90 kDa ribosomal S6 kinases (RSK1-4) are a family of widely expressed serine/threonine kinases and play an important role in the MAPK signaling cascade and act downstream of ERK1/2 signaling. It can mediate mitogenic and stress-induced activation of the transcription factors CREB1, ETV1/ER81 and NR4A1/NUR77. RSK1 (RPS6KA1) is also designated as p90RSK associated with cellular proliferation, survival and differentiation. It has been reported that the phosphorylation of RPS6KA1 at Ser380 is involved in autophosphorylation by activation of the C-terminal kinase domain. (PMID: 16458888, 30813401, 17259979, 10679322)

Stockage

Stockage:
Stocker à -20 °C. Éviter toute exposition à la lumière.

Tampon de stockage:
PBS avec glycérol à 50 %, Proclin300 à 0,05 % et BSA à 0,5 %, pH 7,3.
L'aliquotage n'est pas nécessaire pour le stockage à -20C

***** Les 20ul contiennent 0,1% de BSA.**

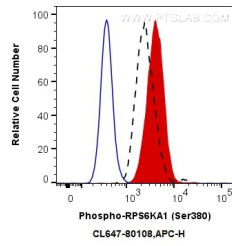
For technical support and original validation data for this product please contact:

T: 1 (888) 4PTGLAB (1-888-478-4522) (toll free in USA), or 1(312) 455-8498 (outside USA)

E: proteintech@ptglab.com
W: ptglab.com

This product is exclusively available under Proteintech Group brand and is not available to purchase from any other manufacturer.

Données de validation sélectionnées



1X10⁶ Jurkat cells untreated (dashed lines) or treated with TPA (red) were intracellularly stained with 0.13 ug CoraLite® Plus 647 Anti-Human Phospho-RPS6KA1 (Ser380) (CL647-80108, Clone:7F23) (red), or 0.13 ug Control Antibody (blue). Cells were fixed with 4% PFA and permeabilized with 90% MeOH.