

À des fins de recherche uniquement

# Anticorps Recombinant de lapin anti-Phospho-STAT5A (Tyr694)



Numéro de catalogue: CL647-80115

## Informations de base

<b>Numéro de catalogue:</b> CL647-80115	<b>Numéro d'acquisition GenBank:</b> BC027036	<b>Méthode de purification:</b> Purification par protéine A
<b>Taille:</b> 100ul , Concentration: 1000 µg/ml by Nanodrop;	<b>Identification du gène (NCBI):</b> 6776	<b>CloneNo.:</b> 2P21
<b>Hôte:</b> Lapin	<b>Nom complet:</b> signal transducer and activator of transcription 5A	<b>Excitation/Emission maxima wavelengths:</b> 654 nm / 674 nm
<b>Isotype:</b> IgG	<b>MW calculé:</b> 794 aa, 92 kDa	
	<b>MW observés:</b> 90-95 kDa	

## Applications

**Applications testées:**  
FC (Intra)

**Spécificité de l'espèce:**  
Humain

## Informations générales

STAT5A, also named as STAT5, belongs to the transcription factor STAT family. In response to cytokines and growth factors, STAT family members are phosphorylated by the receptor associated kinases, and then form homo- or heterodimers that translocate to the cell nucleus where they act as transcription activators. STAT5A is activated by, and mediates the responses of many cell ligands, such as IL2, IL3, IL7 GM-CSF, erythropoietin, thrombopoietin, and different GHs. Phosphorylation at Tyr694 is obligatory for Stat5 activation. Activation of STAT5A in myeloma and lymphoma associated with a TEL/JAK2 gene fusion is independent of cell stimulus and has been shown to be essential for the tumorigenesis. The mouse counterpart of human STAT5A is found to induce the expression of BCL2L1/BCL-X(L), which suggests the antiapoptotic function of STAT5A in cells.

## Stockage

**Stockage:**  
Stocker à -20 °C. Éviter toute exposition à la lumière. Stable pendant un an après l'expédition.

**Tampon de stockage:**  
PBS avec glycérol à 50 %, Proclin300 à 0,05 % et BSA à 0,5 %, pH 7,3.

L'aliquotage n'est pas nécessaire pour le stockage à -20C

**\*\*\* Les 20ul contiennent 0,1% de BSA.**

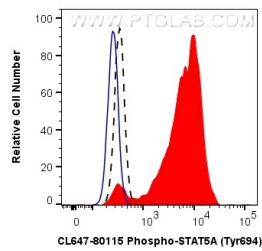
For technical support and original validation data for this product please contact:

T: 1 (888) 4PTGLAB (1-888-478-4522) (toll free in USA), or 1(312) 455-8498 (outside USA)

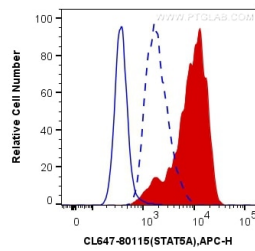
E: [proteintech@ptglab.com](mailto:proteintech@ptglab.com)  
W: [ptglab.com](http://ptglab.com)

**This product is exclusively available under Proteintech Group brand and is not available to purchase from any other manufacturer.**

## Données de validation sélectionnées



1X10<sup>6</sup> TF-1 cells untreated (dashed lines) or treated with GM-CSF (red) were intracellularly stained with 0.06 ug CoraLite® Plus 647 Anti-Human Phospho-STAT5A (Tyr694) (CL647-80115, Clone:2P21), or 0.06 ug Control Antibody (blue, solid line). Cells were fixed with 4% PFA and permeabilized with 90% MeOH.



1X10<sup>6</sup> TF-1 cells untreated (dashed line, low) or treated with GM-CSF (100 ng/mL at 37°C for 30 minutes after serum- starvation overnight, red, positive) were intracellularly stained with 0.13 ug CoraLite® Plus 647 Anti-Human Phospho-STAT5A (Tyr694) (CL647-80115, Clone:2P21) (red), or 0.13 ug Control Antibody (blue, solid line). Cells were fixed with 4% PFA and permeabilized with 90% MeOH.