

À des fins de recherche uniquement

Anticorps Recombinant de lapin anti-BCL2



Numéro de catalogue: **CL647-80313**

Informations de base

Numéro de catalogue: CL647-80313	Numéro d'acquisition GenBank: BC027258	Méthode de purification: Purification par protéine A
Taille: 100ul , Concentration: 1000 µg/ml by Nanodrop;	Identification du gène (NCBI): 596	CloneNo.: 305
Hôte: Lapin	Nom complet: B-cell CLL/lymphoma 2	Dilutions recommandées: IF 1:50-1:500
Isotype: IgG	MW calculé 26 kDa	Excitation/Emission maxima wavelengths: 654 nm / 674 nm
Immunogen Catalog Number: AG3508	MW observés: 26 kDa	

Applications

Applications testées:
FC (Intra), IF
Spécificité de l'espèce:
Humain

Contrôles positifs:
IF : tissu d'appendicite humain,

Informations générales

BCL2 belongs to the Bcl-2 family. It suppresses apoptosis in a variety of cell systems including factor-dependent lymphohematopoietic and neural cells. BCL2 regulates cell death by controlling the mitochondrial membrane permeability (PMID: 10365962). It appears to function in a feedback loop system with caspases. BCL2 inhibits caspase activity either by preventing the release of cytochrome c from the mitochondria and/or by binding to the apoptosis-activating factor (APAF-1) (PMID: 10444588).

Stockage

Stockage:
Stocker à -20 °C. Éviter toute exposition à la lumière. Stable pendant un an après l'expédition.
Tampon de stockage:
PBS avec glycérol à 50 %, Proclin300 à 0,05 % et BSA à 0,5 %, pH 7,3.
L'aliquotage n'est pas nécessaire pour le stockage à -20C

***** Les 20ul contiennent 0,1% de BSA.**

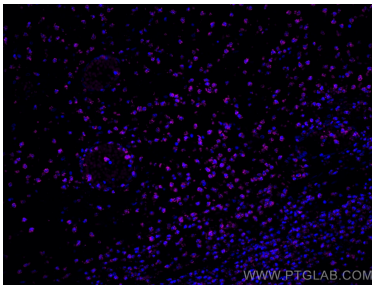
For technical support and original validation data for this product please contact:

T: 1 (888) 4PTGLAB (1-888-478-4522) (toll free
in USA), or 1(312) 455-8498 (outside USA)

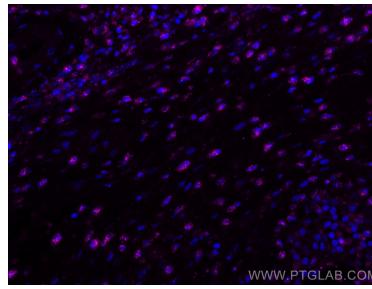
E: proteintech@ptglab.com
W: ptglab.com

This product is exclusively available under Proteintech Group brand and is not available to purchase from any other manufacturer.

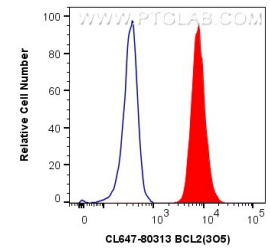
Données de validation sélectionnées



Immunofluorescent analysis of (4% PFA) fixed human appendicitis tissue using CoraLite® Plus 647 BCL2 antibody (CL647-80313, Clone: 3O5) at dilution of 1:200.



Immunofluorescent analysis of (4% PFA) fixed human appendicitis tissue using CoraLite® Plus 647 BCL2 antibody (CL647-80313, Clone: 3O5) at dilution of 1:200.



1X10⁶ Jurkat cells were intracellularly stained with 0.4 ug CoraLite® Plus 647 Anti-Human BCL2 (CL647-80313, Clone:3O5) (red), or 0.4 ug Control Antibody. Cells were fixed with 4% PFA and permeabilized with Flow Cytometry Perm Buffer (PF00011-C).