

À des fins de recherche uniquement

# Anticorps Monoclonal anti-GAPDH

Numéro de catalogue: **CL750-60004**



## Informations de base

<b>Numéro de catalogue:</b> CL750-60004	<b>Numéro d'acquisition GenBank:</b> BC004109	<b>Méthode de purification:</b> Purification par protéine A
<b>Taille:</b> 100ul , Concentration: 1000 µg/ml by Nanodrop;	<b>Identification du gène (NCBI):</b> 2597	<b>CloneNo.:</b> 1E6D9
<b>Hôte:</b> Mouse	<b>Nom complet:</b> glyceraldehyde-3-phosphate dehydrogenase	<b>Dilutions recommandées:</b> WB 1:2000-1:10000
<b>Isotype:</b> IgG2b	<b>MW calculé</b> 36 kDa	<b>Excitation/Emission maxima wavelengths:</b> 755 nm / 780 nm
<b>Immunogen Catalog Number:</b> AG0766	<b>MW observés:</b> 36 kDa	

## Applications

<b>Applications testées:</b> WB	<b>Contrôles positifs:</b> WB : cellules Jurkat, cellules HeLa
<b>Spécificité de l'espèce:</b> Humain, levure, plante, poisson-zèbre, rat, souris	

## Informations générales

Glyceraldehyde-3-phosphate dehydrogenase (GAPDH) catalyzes the phosphorylation of glyceraldehyde-3-phosphate during glycolysis. GAPDH participates in nuclear events including transcription, binding RNA, RNA transportation, DNA replication, DNA repair and apoptosis. Being stably and constitutively expressed at high levels in most tissues and cells, GAPDH is considered a housekeeping protein. It is widely used as a control for RT-PCR and also loading control in electrophoresis and Western blotting. GAPDH is normally expressed in cellular cytoplasm or membrane, but can occasionally translocate to the nucleus after the addition of post-translational modifications such as S-nitrosylation. This antibody is raised against full length GAPDH of human origin. It can recognize the 36 kDa GAPDH protein in most cells/tissues. In addition, a band below 36 kDa can always be detected as the isoform or spliced product of GAPDH (PMID: 23885286, 23877755, 19368702). Please note that some physiological factors, such as hypoxia and diabetes, increase GAPDH expression in certain cell types. For murine tissue samples, conjugated mouse antibody HRP-60004 and rabbit antibody 10494-1-AP are preferable.

## Stockage

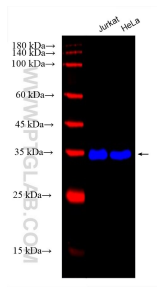
**Stockage:**  
Stocker à -20 °C. Éviter toute exposition à la lumière. Stable pendant un an après l'expédition.  
**Tampon de stockage:**  
PBS avec glycérol à 50 %, Proclin300 à 0,05 % et BSA à 0,5 %, pH 7,3.  
L'aliquotage n'est pas nécessaire pour le stockage à -20C

**\*\*\* Les 20ul contiennent 0,1% de BSA.**

For technical support and original validation data for this product please contact:  
T: 1 (888) 4PTGLAB (1-888-478-4522) (toll free in USA), or 1(312) 455-8498 (outside USA)  
E: [proteintech@ptglab.com](mailto:proteintech@ptglab.com)  
W: [ptglab.com](http://ptglab.com)

This product is exclusively available under Proteintech Group brand and is not available to purchase from any other manufacturer.

## Données de validation sélectionnées



Jurkat cells were subjected to SDS PAGE followed by western blot with CL750-60004 (GAPDH antibody) at dilution of 1:5000 incubated at room temperature for 1.5 hours.