

À des fins de recherche uniquement

Anticorps Monoclonal anti-CD107a / LAMP1



Numéro de catalogue: **CL750-65051**

Informations de base

Numéro de catalogue:
CL750-65051

Taille:
100tests , 5 µl/test

Hôte:
Mouse

Isotype:
IgG1

Numéro d'acquisition GenBank:
BC006345

Identification du gène (NCBI):
3916

Nom complet:
lysosomal-associated membrane
protein 1

Méthode de purification:
Purification par protéine G

CloneNo.:
H4A3

Excitation/Emission maxima
wavelengths:
755 nm / 780 nm

Applications

Applications testées:
FC (Intra)

Spécificité de l'espèce:
Humain

Informations générales

LAMP1 (CD107a) is a heavily glycosylated membrane protein enriched in the lysosomal membrane. LAMP1 is extensively glycosylated with asparagine-linked oligosaccharides which protect it from intracellular proteolysis (PMID: 10521503). Although LAMP1 is expressed largely in the endosome-lysosomal membrane of cells, it is also found on the plasma membrane (PMID: 16168398). Elevated LAMP1 expression at the cell surface has also been detected during platelet and granulocytic cell activation, as well as in some tumor cells (PMID: 29085473). LAMP1 functions to provide selectins with carbohydrate ligands. This protein has also been shown to be a marker of degranulation on lymphocytes such as CD8+ and NK cells and may also play a role in tumor cell differentiation and metastasis (PMID: 18835598; 29085473; 9426697).

Stockage

Stockage:
Store at 2-8°C. Avoid exposure to light. Stable for one year after shipment.
Tampon de stockage:
PBS with 0.09% sodium azide and 0.5% BSA.

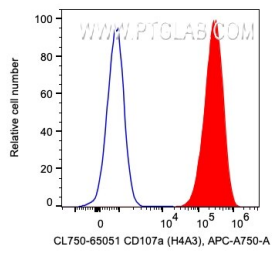
For technical support and original validation data for this product please contact:

T: 1 (888) 4PTGLAB (1-888-478-4522) (toll free
in USA), or 1(312) 455-8498 (outside USA)

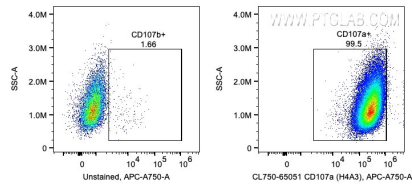
E: proteintech@ptglab.com
W: ptglab.com

This product is exclusively available under Proteintech Group brand and is not available to purchase from any other manufacturer.

Données de validation sélectionnées



1X10⁶ HeLa cells were intracellularly stained with 5 ul CoraLite® Plus 750 Anti-Human LAMP1 (CL750-65051, Clone:H4A3). Cells were fixed with 4% PFA and permeabilized with Intracellular Staining Permeabilization Wash Buffer.



1X10⁶ HeLa cells were intracellularly stained with 5 ul CoraLite® Plus 750 Anti-Human LAMP1 (CL750-65051, Clone:H4A3). Cells were fixed with 4% PFA and permeabilized with Intracellular Staining Permeabilization Wash Buffer.