

À des fins de recherche uniquement

# Anticorps Monoclonal anti-CD11b

Numéro de catalogue: CL750-65055



## Informations de base

Numéro de catalogue:  
CL750-65055

Taille:  
100ug, 0.5 mg/ml

Hôte:  
Rat

Isotype:  
IgG2b, kappa

Numéro d'acquisition GenBank:  
BC156991

Identification du gène (NCBI):  
16409

Nom complet:  
integrin alpha M

Méthode de purification:  
Purification par affinité

CloneNo.:  
M1/70

Excitation/Emission maxima  
wavelengths:  
755 nm / 780 nm

## Applications

Applications testées:  
FC

Spécificité de l'espèce:  
Humain, souris

## Informations générales

Integrins are cell adhesion receptors that are heterodimers composed of non-covalently associated  $\alpha$  and  $\beta$  subunits (PMID: 9779984). CD11b, also known as Integrin alpha M or CR3A, belongs to the integrin alpha chain family. CD11b forms an  $\alpha/\beta$  heterodimer with CD18 (integrin  $\beta$ 2). CD11b/CD18 is implicated in various adhesive interactions of monocytes, macrophages and granulocytes as well as in mediating the uptake of complement-coated particles and pathogens (PMID: 9558116; 20008295). CD11b/CD18 is a receptor for the complement protein fragment iC3b, and is also a receptor for fibrinogen, factor X and ICAM1 (PMID: 2971974; 15485828).

## Stockage

Stockage:

Store at 2-8°C. Avoid exposure to light. Stable for one year after shipment.

Tampon de stockage:

PBS with 0.09% sodium azide.

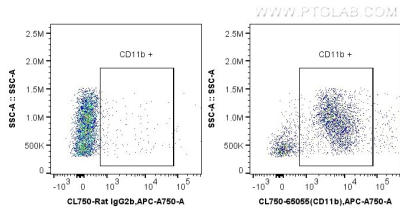
For technical support and original validation data for this product please contact:

T: 1 (888) 4PTGLAB (1-888-478-4522) (toll free  
in USA), or 1(312) 455-8498 (outside USA)

E: [proteintech@ptglab.com](mailto:proteintech@ptglab.com)  
W: [ptglab.com](http://ptglab.com)

This product is exclusively available under Proteintech Group brand and is not available to purchase from any other manufacturer.

## Données de validation sélectionnées



1X10<sup>6</sup> mouse bone marrow cells were surface stained with 0.5 ug CoraLite® Plus 750 Anti-Mouse CD11b (CL750-65055, Clone: M1/70), or 0.5 ug Control Antibody. Cells were not fixed.