

À des fins de recherche uniquement

# Anticorps Monoclonal anti-CD25

Numéro de catalogue: **CL750-65137**



## Informations de base

Numéro de catalogue:  
CL750-65137

Taille:  
100ug, 0.5 mg/ml

Hôte:  
Rat

Isotype:  
IgG1, lambda

Numéro d'acquisition GenBank:  
BC114437

Identification du gène (NCBI):  
16184

Nom complet:  
interleukin 2 receptor, alpha chain

Méthode de purification:  
Purification par affinité

CloneNo.:  
PC61.5

Excitation/Emission maxima  
wavelengths:  
755 nm / 780 nm

## Applications

Applications testées:  
FC

Spécificité de l'espèce:  
souris

## Informations générales

Proliferation of T lymphocytes is triggered by the interaction of IL-2 with its specific receptor following T lymphocyte activation. The receptor for IL-2 has three forms, generated by different combinations of three different proteins, the alpha chain (IL-2R alpha), the beta chain (IL-2R beta), and the gamma chain (IL-2R gamma) (PMID: 8476561). IL-2R alpha (also known as CD25) is a type I transmembrane protein present on activated T cells, activated B cells, some thymocytes, myeloid precursors, and oligodendrocytes. CD25 is also found on natural CD4<sup>+</sup>Foxp3<sup>+</sup> Treg cells (PMID: 22585674).

## Stockage

Stockage:

Store at 2-8°C. Avoid exposure to light. Stable for one year after shipment.

Tampon de stockage:

PBS with 0.09% sodium azide.

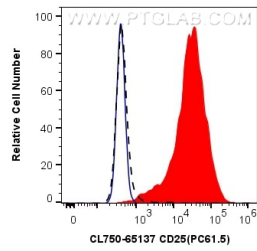
For technical support and original validation data for this product please contact:

T: 1 (888) 4PTGLAB (1-888-478-4522) (toll free  
in USA), or 1(312) 455-8498 (outside USA)

E: [proteintech@ptglab.com](mailto:proteintech@ptglab.com)  
W: [ptglab.com](http://ptglab.com)

**This product is exclusively available under Proteintech Group brand and is not available to purchase from any other manufacturer.**

## Données de validation sélectionnées



1X10<sup>6</sup> stimulated (dashed) or plate-bound Anti-CD3 and Anti-CD28 stimulated mouse splenocytes were surface stained with 0.5 ug Coralite® Plus 750 Anti-Mouse CD25 (CL750-65137, Clone: PC61.5) (red), or 0.5 ug Control Antibody. Cells were not fixed.