

À des fins de recherche uniquement

Anticorps Monoclonal anti-CD62L

Numéro de catalogue: **CL750-65167**



Informations de base

Numéro de catalogue:
CL750-65167

Taille:
100tests , 5 ul/test

Hôte:
Mouse

Isotype:
IgG1, kappa

Numéro d'acquisition GenBank:
BC020758

Identification du gène (NCBI):
6402

Nom complet:
selectin L

MW calculé
42 kDa

Méthode de purification:

Purifié par chromatographie d'affinité
par protéine A

CloneNo.:
DREG56

Excitation/Emission maxima
wavelengths:
755 nm / 780 nm

Applications

Applications testées:
FC

Spécificité de l'espèce:
Humain

Informations générales

CD62L, also known as L-selectin or SELL, is a member of the selectin family of adhesion molecules that also include CD62E (E-selectin) and CD62P (P-selectin) (PMID: 2663882, 2473156, 1382078). CD62L is a highly glycosylated protein of 95-105 kDa on neutrophils and 74 kDa on lymphocytes (PMID: 1382078; 1694883, 1695155). CD62L is expressed on the surface of most leukocytes, including lymphocytes, neutrophils, monocytes, eosinophils, hematopoietic progenitor cells, and immature thymocytes (PMID: 1694883, 1688580). It mediates the binding of lymphocytes to high endothelial venules (HEV) of peripheral lymph nodes through interactions with a constitutively expressed ligand, and is also involved in lymphocyte, neutrophil, and monocyte attachment to endothelium at sites of inflammation (PMID: 1382078).

Stockage

Stockage:

Store at 2-8°C. Avoid exposure to light. Stable for one year after shipment.

Tampon de stockage:

PBS with 0.09% sodium azide and 0.5% BSA.

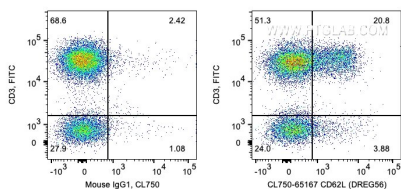
For technical support and original validation data for this product please contact:

T: 1 (888) 4PTGLAB (1-888-478-4522) (toll free
in USA), or 1(312) 455-8498 (outside USA)

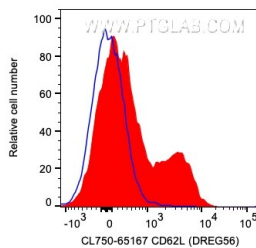
E: proteintech@ptglab.com
W: ptglab.com

This product is exclusively available under Proteintech Group brand and is not available to purchase from any other manufacturer.

Données de validation sélectionnées



1X10⁶ human PBMCs were surface co-stained with FITC Anti-Human CD3 and 5 ul CoraLite® Plus 750 Anti-Human CD62L (CL750-65167, Clone: DREG56) or Mouse IgG1 Isotype Control. Cells were not fixed. Lymphocytes were gated.



1X10⁶ human PBMCs were surface co-stained with FITC Anti-Human CD3 and 5 ul CoraLite® Plus 750 Anti-Human CD62L (CL750-65167, Clone: DREG56) or Mouse IgG1 Isotype Control. Cells were not fixed. CD3⁺ Lymphocytes were gated.