

À des fins de recherche uniquement

# Anticorps Monoclonal anti-CD2

Numéro de catalogue: **CL750-65192**



## Informations de base

Numéro de catalogue:  
CL750-65192

Taille:  
100tests, 5 µl/test

Hôte:  
Mouse

Isotype:  
Mouse IgG1, kappa

Numéro d'acquisition GenBank:  
BC033583

Identification du gène (NCBI):  
914

Nom complet:  
CD2 molecule

MW calculé  
351 aa, 39 kDa

Méthode de purification:  
Purification par affinité

CloneNo.:  
TS1/8

Excitation/Emission maxima  
wavelengths:  
755 nm / 780 nm

## Applications

Applications testées:  
FC

Spécificité de l'espèce:  
Humain

## Informations générales

CD2 is a cell surface glycoprotein present on a majority of thymocytes, all mature T cells and subset of NK cells but not on B lymphocytes. It is a pan T-cell marker. CD2 interacts with lymphocyte function-associated antigen (LFA-3/CD58) and CD48/BCM1 to mediate adhesion between T-cells and other cell types. CD2 is implicated in the triggering of T-cells, the cytoplasmic domain is implicated in the signaling function.

## Stockage

Stockage:  
Store at 2-8°C. Avoid exposure to light. Stable for one year after shipment.  
Tampon de stockage:  
PBS with 0.09% sodium azide and 0.5% BSA.

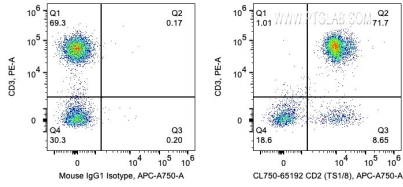
For technical support and original validation data for this product please contact:

T: 1 (888) 4PTGLAB (1-888-478-4522) (toll free  
in USA), or 1(312) 455-8498 (outside USA)

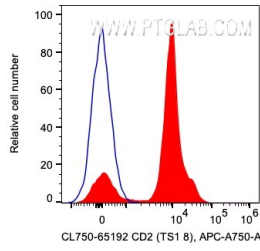
E: [proteintech@ptglab.com](mailto:proteintech@ptglab.com)  
W: [ptglab.com](http://ptglab.com)

**This product is exclusively available under Proteintech Group brand and is not available to purchase from any other manufacturer.**

## Données de validation sélectionnées



1X10<sup>6</sup> human PBMCs were surface co-stained with PE Anti-Human CD3 and 5 ul CoraLite® Plus 750 Anti-Human CD2 (CL750-65192, Clone:TS1/8 or Mouse IgG1 Isotype Control). Cells were not fixed. Lymphocytes were gated.



1X10<sup>6</sup> human PBMCs were surface stained with 5 ul CoraLite® Plus 750 Anti-Human CD2 (CL750-65192, Clone:TS1/8 or Mouse IgG1 Isotype Control). Cells were not fixed. Lymphocytes were gated.