

À des fins de recherche uniquement

Anticorps Monoclonal anti-CD21

Numéro de catalogue: CL750-65198



Informations de base

Numéro de catalogue:
CL750-65198

Taille:
100 tests, 5 µl/test

Hôte:
Mouse

Isotype:
IgG1, kappa

Numéro d'acquisition GenBank:
BC136394

Identification du gène (NCBI):
1380

Nom complet:
complement component (3d/Epstein
Barr virus) receptor 2

MW calculé
1092 aa, 119 kDa

Méthode de purification:
Purification par protéine G

CloneNo.:
BU32

Excitation/Emission maxima
wavelengths:
755 nm / 780 nm

Applications

Applications testées:
FC

Spécificité de l'espèce:
Humain

Informations générales

CD21, also known as complement receptor type 2 (CR2), complement C3d receptor, and Epstein-Barr virus receptor, is a transmembrane protein that contains a small cytoplasmic domain, a transmembrane region and an extracellular domain consisting of 15 tandem short consensus repeat sequences (PMID: 6230668; 2551147). It is expressed on B cells, follicular dendritic cells, thymocytes and a subset of peripheral T cells (PMID: 26119182). CD21 binds complement fragments C3d, C3dg and iC3b and acts as a receptor for the Epstein-Barr virus (PMID: 7753047). On B cells, together with CD19 and CD81, CD21 forms a complex that functions as a co-receptor to the BCR (PMID: 7542009). It is involved in B cells activation and functions.

Stockage

Stockage:
Store at 2-8°C. Avoid exposure to light. Stable for one year after shipment.
Tampon de stockage:
PBS with 0.09% sodium azide and 0.5% BSA.

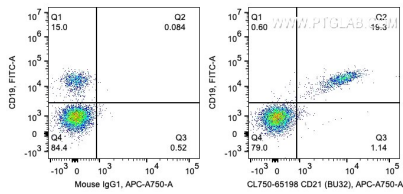
For technical support and original validation data for this product please contact:

T: 1 (888) 4PTGLAB (1-888-478-4522) (toll free
in USA), or 1(312) 455-8498 (outside USA)

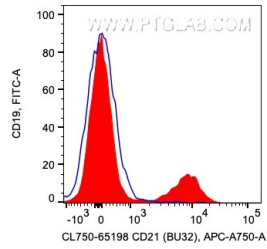
E: proteintech@ptglab.com
W: ptglab.com

This product is exclusively available under Proteintech Group brand and is not available to purchase from any other manufacturer.

Données de validation sélectionnées



1X10⁶ human PBMCs were surface co-stained with FITC Anti-Human CD19 and 5 ul CoraLite® Plus 750 Anti-Human CD21 (CL750-65198, Clone:BU32) or Mouse IgG1 Isotype Control (66360-1-Ig, Clone: T1F8D3F10). Cells were not fixed. Lymphocytes were gated.



1X10⁶ human PBMCs were surface stained with 5 ul CoraLite® Plus 750 Anti-Human CD21 (CL750-65198, Clone: BU32) or Mouse IgG1 Isotype Control (66360-1-Ig, Clone: T1F8D3F10). Cells were not fixed. Lymphocytes were gated.