

À des fins de recherche uniquement

Anticorps Monoclonal anti-CD68

Numéro de catalogue: **CL750-65202**



Informations de base

Numéro de catalogue: CL750-65202	Numéro d'acquisition GenBank: BC015557	Méthode de purification: Purification par protéine G
Taille: 100tests , 5 µl/test	Identification du gène (NCBI): 968	CloneNo.: KP1
Hôte: Mouse	Nom complet: CD68 molecule	Excitation/Emission maxima wavelengths: 755 nm / 780 nm
Isotype: IgG1, kappa	MW calculé 37 kDa	

Applications

Applications testées:
FC (Intra)

Spécificité de l'espèce:
Humain

Informations générales

CD68 is a type I transmembrane glycoprotein that is highly expressed by human monocytes and tissue macrophages. It belongs to the lysosomal/endosomal-associated membrane glycoprotein (LAMP) family and primarily localizes to lysosomes and endosomes with a smaller fraction circulating to the cell surface. CD68 is also a member of the scavenger receptor family. It may play a role in phagocytic activities of tissue macrophages.

Stockage

Stockage:
Store at 2-8°C. Avoid exposure to light. Stable for one year after shipment.

Tampon de stockage:
PBS with 0.09% sodium azide and 0.5% BSA.

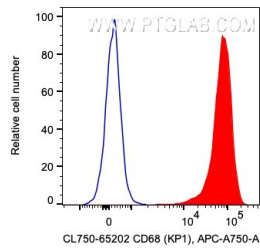
For technical support and original validation data for this product please contact:

T: 1 (888) 4PTGLAB (1-888-478-4522) (toll free in USA), or 1(312) 455-8498 (outside USA)

E: proteintech@ptglab.com
W: ptglab.com

This product is exclusively available under Proteintech Group brand and is not available to purchase from any other manufacturer.

Données de validation sélectionnées



1X10⁶ human PBMCs were intracellularly stained with 5 ul CoraLite® Plus 750 Anti-Human CD68 (CL750-65202, Clone:KP1). Cells were fixed with 4% PFA and permeabilized with Intracellular Staining Permeabilization Wash Buffer. Monocytes were gated.