

À des fins de recherche uniquement

# Anticorps Monoclonal anti-LRP1

Numéro de catalogue: **CL750-65233**



## Informations de base

Numéro de catalogue:

CL750-65233

Taille:

100 tests, 5 µl/test

Hôte:

Mouse

Isotype:

IgG2b

Numéro d'acquisition GenBank:

BC045107

Identification du gène (NCBI):

4035

Nom complet:

low density lipoprotein-related protein 1 (alpha-2-macroglobulin receptor)

MW calculé

505 kDa

Méthode de purification:

N/A

CloneNo.:

5A6

Excitation/Emission maxima wavelengths:

755 nm / 780 nm

## Applications

Applications testées:

FC

Spécificité de l'espèce:

Humain

## Informations générales

### Stockage

Stockage:

Store at 2-8°C. Avoid exposure to light. Stable for one year after shipment.

Tampon de stockage:

PBS with 0.09% sodium azide and 0.5% BSA.

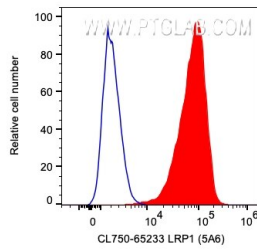
For technical support and original validation data for this product please contact:

T: 1 (888) 4PTGLAB (1-888-478-4522) (toll free in USA), or 1(312) 455-8498 (outside USA)

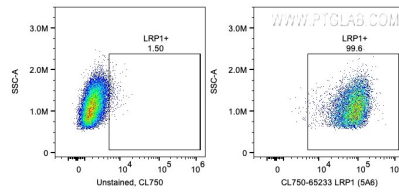
E: [proteintech@ptglab.com](mailto:proteintech@ptglab.com)  
W: [ptglab.com](http://ptglab.com)

**This product is exclusively available under Proteintech Group brand and is not available to purchase from any other manufacturer.**

## Données de validation sélectionnées



1X10<sup>6</sup> U-87 MG cells were surface stained with 5 ul CoraLite® Plus 750 Anti-Human LRP1 (CL750-65233, Clone:5A6) or unstained. Cells were not fixed.



1X10<sup>6</sup> U-87 MG cells were surface stained with 5 ul CoraLite® Plus 750 Anti-Human LRP1 (CL750-65233, Clone:5A6) or unstained. Cells were not fixed.