

À des fins de recherche uniquement

# Anticorps Monoclonal anti-CD26

Numéro de catalogue: **CL750-65267**



## Informations de base

Numéro de catalogue:  
CL750-65267

Taille:  
100tests , 5 ul/test

Hôte:  
Mouse

Isotype:  
IgG2a, kappa

Numéro d'acquisition GenBank:  
BC013329

Identification du gène (NCBI):  
1803

Nom complet:  
dipeptidyl-peptidase 4

MW calculé  
88 kDa

Méthode de purification:  
Purification par affinité

CloneNo.:  
BA5b

Excitation/Emission maxima  
wavelengths:  
755 nm / 780 nm

## Applications

Applications testées:  
FC

Spécificité de l'espèce:  
Humain

## Informations générales

CD26, also known as DPP4 (dipeptidyl peptidase-4), is a 110 kDa type II cell-surface glycoprotein widely expressed on T cells, activated B cells, activated NK cells and myeloid cells as well as on epithelial cells, fibroblasts, mesothelium, and endothelial cells of a variety of tissues (PMID:33777580; 26919392). It has ecto-enzyme activity in its extracellular domain and cleaves amino-terminal dipeptides with either L-proline or L-alanine at the penultimate position (PMID: 9553764). CD26 plays roles in diverse biological processes such as immunoregulation, glucose homeostasis, and tumorigenesis (PMID: 33777580).

## Stockage

Stockage:

Store at 2-8°C. Avoid exposure to light. Stable for one year after shipment.

Tampon de stockage:

PBS with 0.09% sodium azide and 0.5% BSA.

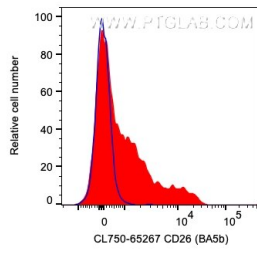
For technical support and original validation data for this product please contact:

T: 1 (888) 4PTGLAB (1-888-478-4522) (toll free  
in USA), or 1(312) 455-8498 (outside USA)

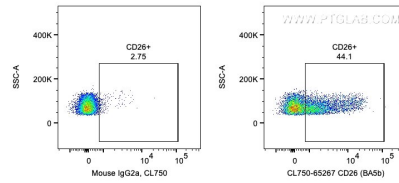
E: [proteintech@ptglab.com](mailto:proteintech@ptglab.com)  
W: [ptglab.com](http://ptglab.com)

**This product is exclusively available under Proteintech Group brand and is not available to purchase from any other manufacturer.**

## Données de validation sélectionnées



1X10<sup>6</sup> human PBMCs were surface stained with 5 ul CoraLite® Plus 750 Anti-Human CD26 (CL750-65267, Clone:BA5b) (red) or Mouse IgG2a Isotype Control. Cells were not fixed. Lymphocytes were gated.



1X10<sup>6</sup> human PBMCs were surface stained with 5 ul CoraLite® Plus 750 Anti-Human CD26 (CL750-65267, Clone:BA5b) or Mouse IgG2a Isotype Control. Cells were not fixed. Lymphocytes were gated.