

À des fins de recherche uniquement

Anticorps Monoclonal anti-TBP

Numéro de catalogue: CL750-66166



Informations de base

Numéro de catalogue: CL750-66166	Numéro d'acquisition GenBank: BC110341	Méthode de purification: Purification par protéine A
Taille: 100ul , Concentration: 1000 µg/ml by Nanodrop;	Identification du gène (NCBI): 6908	CloneNo.: 2H3B2
Hôte: Mouse	Nom complet: TATA box binding protein	Dilutions recommandées: WB 1:5000-1:50000
Isotype: IgG2a	MW calculé 338 aa, 38 kDa	Excitation/Emission maxima wavelengths: 755 nm / 780 nm
Immunogen Catalog Number: AG12383	MW observés: mouse/rat 33-36 kDa and human 37- 43kDa	

Applications

Applications testées:
WB

Spécificité de l'espèce:
Humain, porc, rat, souris

Contrôles positifs:

WB : cellules HEK-293, cellules HepG2, cellules Jurkat

Informations générales

The TATA binding protein (TBP) is a transcription factor that binds specifically to a DNA sequence TATA box. This DNA sequence is found about 25-30 base pairs upstream of the transcription start site in some eukaryotic gene promoters. TBP, along with a variety of TBP-associated factors, make up the TFIID, a general transcription factor that in turn makes up part of the RNA polymerase II preinitiation complex. As one of the few proteins in the preinitiation complex that binds DNA in a sequence-specific manner, it helps position RNA polymerase II over the transcription start site of the gene. However, it is estimated that only 10-20% of human promoters have TATA boxes. Therefore, TBP is probably not the only protein involved in positioning RNA polymerase II. This antibody detects human TBP (~40 kDa) and mouse/rat Tbp (~35 kDa).

Stockage

Stockage:

Stocker à -20 °C. Éviter toute exposition à la lumière. Stable pendant un an après l'expédition.

Tampon de stockage:

PBS avec glycérol à 50 %, Proclin300 à 0,05 % et BSA à 0,5 %, pH 7,3.

L'aliquotage n'est pas nécessaire pour le stockage à -20C

***** Les 20ul contiennent 0,1% de BSA.**

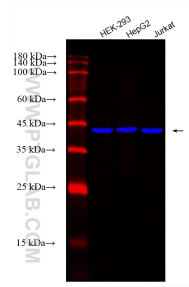
For technical support and original validation data for this product please contact:

T: 1 (888) 4PTGLAB (1-888-478-4522) (toll free
in USA), or 1(312) 455-8498 (outside USA)

E: proteintech@ptglab.com
W: ptglab.com

This product is exclusively available under Proteintech Group brand and is not available to purchase from any other manufacturer.

Données de validation sélectionnées



Various lysates were subjected to SDS PAGE followed by western blot with CL750-66166 (TBP antibody) at dilution of 1:20000 incubated at room temperature for 1.5 hours.