

À des fins de recherche uniquement

Anticorps Recombinant de lapin anti-Lamin B1



Numéro de catalogue: **CL750-80906**

Phare

Informations de base

Numéro de catalogue: CL750-80906	Numéro d'acquisition GenBank: BC012295	Méthode de purification: Purification par protéine A
Taille: 100ul , Concentration: 1000 µg/ml by Nanodrop;	Identification du gène (NCBI): 4001	CloneNo.: 5H10
Hôte: Lapin	Nom complet: lamin B1	Dilutions recommandées: WB 1:1000-1:8000
Isotype: IgG	MW calculé 66 kDa	Excitation/Emission maxima wavelengths: 755 nm / 780 nm
Immunogen Catalog Number: AG3631	MW observés: 66-70 kDa	

Applications

Applications testées:
WB

Spécificité de l'espèce:
Humain, rat, souris

Contrôles positifs:

WB : cellules HeLa, cellules HepG2

Informations générales

Lamins are components of the nuclear lamina, a fibrous layer on the nucleoplasmic side of the inner nuclear membrane, which is thought to provide a framework for the nuclear envelope and may also interact with chromatin. The nuclear lamina consists of a two-dimensional matrix of proteins located next to the inner nuclear membrane. The lamin family of proteins make up the matrix and are highly conserved in evolution. During mitosis, the lamina matrix is reversibly disassembled as the lamin proteins are phosphorylated. Vertebrate lamins consist of two types, A and B. This gene encodes one of the two B type proteins, B1. Expression of uncleavable mutant lamin A or B caused significant delays in the onset of chromatin condensation and nuclear shrinkage during apoptosis (PMID:11953316). This protein is not suitable for samples where the nuclear envelope has been removed.

Stockage

Stockage:

Stocker à -20 °C. Éviter toute exposition à la lumière. Stable pendant un an après l'expédition.

Tampon de stockage:

PBS avec glycérol à 50 %, Proclin300 à 0,05 % et BSA à 0,5 %, pH 7,3.

L'aliquotage n'est pas nécessaire pour le stockage à -20C

***** Les 20ul contiennent 0,1% de BSA.**

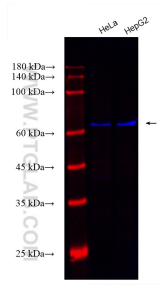
For technical support and original validation data for this product please contact:

T: 1 (888) 4PTGLAB (1-888-478-4522) (toll free
in USA), or 1(312) 455-8498 (outside USA)

E: proteintech@ptglab.com
W: ptglab.com

This product is exclusively available under Proteintech Group brand and is not available to purchase from any other manufacturer.

Données de validation sélectionnées



Various lysates were subjected to SDS PAGE followed by western blot with CL750-80906 (Lamin B1 antibody) at dilution of 1:4000 incubated at room temperature for 1.5 hours.