

À des fins de recherche uniquement

# Anticorps Polyclonal de lapin anti-PTEN



Numéro de catalogue: **CR-22034** **Phare**

## Informations de base

Numéro de catalogue: CR-22034	Numéro d'acquisition GenBank: BC005821	Méthode de purification: Purification par affinité contre l'antigène
Taille: 100ul , Concentration: 1 mg/mL by Nanodrop;	Identification du gène (NCBI): 5728	Excitation/Emission maxima wavelengths: 592 nm / 611 nm
Hôte: Lapin	Nom complet: phosphatase and tensin homolog	
Isotype: IgG	MW calculé 47 kDa	
Immunogen Catalog Number: AG17274	MW observés: 55 kDa, 68 kDa	

## Applications

Applications testées:  
FC (Intra)  
Spécificité de l'espèce:  
Humain, souris

## Informations générales

PTEN(Phosphatase and tensin homolog) is also named as MMAC1, TEP1 and it modulates cell cycle progression and cell survival (blockage) through down-regulating the positive cell cycle-regulator (cycle D1) by its phosphatase activity and up-regulating the negative cell cycle regulator p21 (by its lipid phosphatase activity). PTEN is an important tumor suppressor whose inactivation frequency in cancers is ranked second after p53 tumor suppressor inactivation. PTEN is a 403-residue protein structured in an amino (N)-terminal phosphatase domain and a carboxy (C)-terminal C2 domain that binds phospholipid membranes.(PMID:14749127). There are some report showing that SUMOylation appears to be a positive regulator in controlling PTEN membrane association, whereas phosphorylation is a negative regulator that may neutralize SUMOylation through intramolecular electrostatic interactions (PMID:22713753). This antibody can recognize two isoforms with MW of 55kDa and 68 kDa.

## Stockage

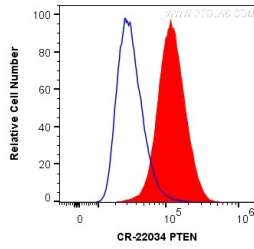
Stockage:  
Stocker à -20 °C. Éviter toute exposition à la lumière. Stable pendant un an après l'expédition.  
Tampon de stockage:  
PBS avec glycérol à 50 %, Proclin300 à 0,05 % et BSA à 0,5 %, pH 7,3.  
L'aliquotage n'est pas nécessaire pour le stockage à -20C

**\*\*\* Les 20ul contiennent 0,1% de BSA.**

For technical support and original validation data for this product please contact:  
T: 1 (888) 4PTGLAB (1-888-478-4522) (toll free in USA), or 1(312) 455-8498 (outside USA)  
E: [proteintech@ptglab.com](mailto:proteintech@ptglab.com)  
W: [ptglab.com](http://ptglab.com)

This product is exclusively available under Proteintech Group brand and is not available to purchase from any other manufacturer.

## Données de validation sélectionnées



1X10<sup>6</sup> HeLa cells were intracellularly stained with 0.2 ug Cardinal Red™ Anti-Human PTEN (CR-22034) (red), or 0.2 ug Control Antibody. Cells were fixed with 4% PFA and permeabilized with Flow Cytometry Perm Buffer (PF00011-C).