

À des fins de recherche uniquement

Anticorps Monoclonal anti-CD42b

Numéro de catalogue: **CR-65163**



Informations de base

Numéro de catalogue:

CR-65163

Taille:

100tests, 5 µl/test

Hôte:

Mouse

Isotype:

IgG1

Numéro d'acquisition GenBank:

BC027955

Identification du gène (NCBI):

2811

Nom complet:

glycoprotein Ib (platelet), alpha polypeptide

MW calculé

626 aa, 69 kDa

Méthode de purification:

Purifié par chromatographie d'affinité par protéine A

CloneNo.:

AK2

Excitation/Emission maxima wavelengths:

592 nm / 611 nm

Applications

Applications testées:

FC

Spécificité de l'espèce:

Humain

Informations générales

CD42b, also known as platelet glycoprotein Ib alpha chain (GPIb alpha), is a type I transmembrane glycoprotein of 135-145 kDa (PMID: 2656709). It is expressed on platelets and megakaryocytes. CD42b and CD42c (GPIb beta) are linked by a disulphide bond to form GPIb (PMID: 7660135). GPIb forms a noncovalent complex with CD42a (GPIX) and CD42d (GPV) and acts as a receptor for von Willebrand factor (vWF) and thrombin (PMID: 7660135; 3759960). The GPIb-V-IX complex mediates vWF-dependent platelet adhesion to blood vessels. Defects in the expression of CD42b result in Bernard-Soulier syndromes and platelet-type von Willebrand disease (PMID: 9371310).

Stockage

Stockage:

Store at 2-8°C. Avoid exposure to light. Stable for one year after shipment.

Tampon de stockage:

PBS with 0.09% sodium azide and 0.5% BSA.

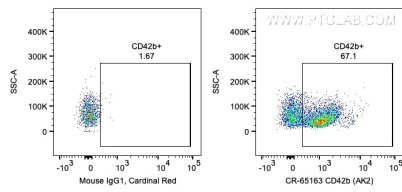
For technical support and original validation data for this product please contact:

T: 1 (888) 4PTGLAB (1-888-478-4522) (toll free in USA), or 1(312) 455-8498 (outside USA)

E: proteintech@ptglab.com
W: ptglab.com

This product is exclusively available under Proteintech Group brand and is not available to purchase from any other manufacturer.

Données de validation sélectionnées



1X10⁶ human peripheral blood platelets were surface stained with 5 ul Cardinal Red™ Anti-Human CD42b (CR-65163, Clone: AK2) or Mouse IgG1 Isotype Control. Cells were not fixed.