

À des fins de recherche uniquement

Anticorps Monoclonal anti-CD279

Numéro de catalogue: **CR-65168**



Informations de base

Numéro de catalogue: CR-65168	Numéro d'acquisition GenBank: BC074740	Méthode de purification: Purification par affinité
Taille: 100tests , 5 ul/test	Identification du gène (NCBI): 5133	CloneNo.: EH12.2H7
Hôte: Mouse	Nom complet: programmed cell death 1	Excitation/Emission maxima wavelengths: 592 nm / 611 nm
Isotype: IgG1, kappa	MW calculé 288 aa, 32 kDa	

Applications

Applications testées:
FC

Spécificité de l'espèce:
Humain, primates non humains

Informations générales

Programmed cell death 1 (PD-1, also known as CD279) is an immunoinhibitory receptor that belongs to the CD28/CTLA-4 subfamily of the Ig superfamily. It is a 288 amino acid (aa) type I transmembrane protein composed of one Ig superfamily domain, a stalk, a transmembrane domain, and an intracellular domain containing an immunoreceptor tyrosine-based inhibitory motif (ITIM) as well as an immunoreceptor tyrosine-based switch motif (ITSM) (PMID: 18173375). PD-1 is expressed during thymic development and is induced in a variety of hematopoietic cells in the periphery by antigen receptor signaling and cytokines (PMID: 20636820). Engagement of PD-1 by its ligands PD-L1 or PD-L2 transduces a signal that inhibits T-cell proliferation, cytokine production, and cytolytic function (PMID: 19426218). It is critical for the regulation of T cell function during immunity and tolerance. Blockade of PD-1 can overcome immune resistance and also has been shown to have antitumor activity (PMID: 22658127; 23169436).

Stockage

Stockage:
Store at 2-8°C. Avoid exposure to light. Stable for one year after shipment.

Tampon de stockage:
PBS with 0.09% sodium azide and 0.5% BSA.

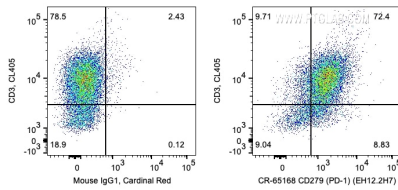
For technical support and original validation data for this product please contact:

T: 1 (888) 4PTGLAB (1-888-478-4522) (toll free in USA), or 1(312) 455-8498 (outside USA)

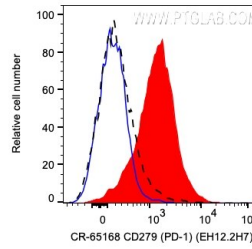
E: proteintech@ptglab.com
W: ptglab.com

This product is exclusively available under Proteintech Group brand and is not available to purchase from any other manufacturer.

Données de validation sélectionnées



1X10⁶ day 3 PHA treated human PBMCs were co-surface stained with CL405 Anti-Human CD3 and 5 ul Cardinal Red™ Anti-Human CD279 (CR-65168, Clone:EH12.2H7) or Mouse IgG1 Isotype Control. Cells were not fixed. Lymphocytes were gated.



1X10⁶ day 3 PHA treated human PBMCs were surface stained with 5 ul Cardinal Red™ Anti-Human CD279 (CR-65168, Clone: EH12.2H7) (red) or Mouse IgG1 Isotype Control (blue). Unactivated human PBMCs were surface stained with 5 ul Cardinal Red™ Anti-Human CD279 (black). Cells were not fixed. Lymphocytes were gated.