

À des fins de recherche uniquement

# Anticorps Monoclonal anti-CD11a

Numéro de catalogue: CR-65194



## Informations de base

Numéro de catalogue:  
CR-65194

Taille:  
100 tests, 5 µl/test

Hôte:  
Mouse

Isotype:  
IgG1, kappa

Numéro d'acquisition GenBank:  
BC008777

Identification du gène (NCBI):  
3683

Nom complet:  
integrin, alpha L (antigen CD11A  
(p180), lymphocyte function-  
associated antigen 1; alpha  
polypeptide)

MW calculé  
129 kDa

Méthode de purification:  
Purification par protéine G

CloneNo.:  
TS2/4

Excitation/Emission maxima  
wavelengths:  
592 nm / 611 nm

## Applications

Applications testées:  
FC

Spécificité de l'espèce:  
Humain

## Informations générales

CD11a, also known as integrin  $\alpha$ L or LFA-1 $\alpha$ , is a 170-180 kDa transmembrane glycoprotein that forms a heterodimer with CD18 (PMID: 7027264; 1672643). CD11a/CD18 (LFA-1) is expressed by all leukocytes and mediates cell adhesion through interactions with its ligands, intercellular adhesion molecule 1 (ICAM-1), ICAM-2, and ICAM-3 (PMID: 7479767). CD11a/CD18 also functions in lymphocyte costimulatory signaling (PMID: 1972160).

## Stockage

Stockage:  
Store at 2-8°C. Avoid exposure to light. Stable for one year after shipment.  
Tampon de stockage:  
PBS with 0.09% sodium azide and 0.5% BSA.

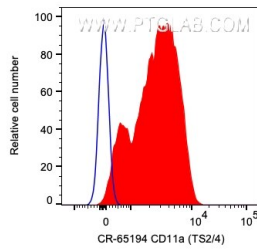
For technical support and original validation data for this product please contact:

T: 1 (888) 4PTGLAB (1-888-478-4522) (toll free  
in USA), or 1(312) 455-8498 (outside USA)

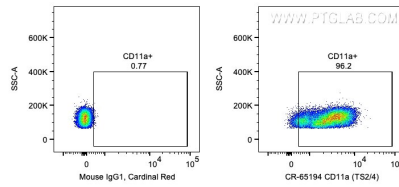
E: [proteintech@ptglab.com](mailto:proteintech@ptglab.com)  
W: [ptglab.com](http://ptglab.com)

This product is exclusively available under Proteintech Group brand and is not available to purchase from any other manufacturer.

## Données de validation sélectionnées



1X10<sup>6</sup> human PBMCs were surface stained with 5 ul Cardinal Red™ Anti-Human CD11a (CR-65194, Clone:TS2/4) (red) or Mouse IgG1 Isotype Control. Cells were not fixed. Lymphocytes were gated.



1X10<sup>6</sup> human PBMCs were surface stained with 5 ul Cardinal Red™ Anti-Human CD11a (CR-65194, Clone:TS2/4) or Mouse IgG1 Isotype Control. Cells were not fixed. Lymphocytes were gated.