

À des fins de recherche uniquement

Anticorps Monoclonal anti-CD68

Numéro de catalogue: CR-65202



Informations de base

| | | |
|----------------------------------|---|---|
| Numéro de catalogue: CR-65202 | Numéro d'acquisition GenBank: BC015557 | Méthode de purification: Purification par protéine G |
| Taille: 100tests , 5 µl/test | Identification du gène (NCBI): 968 | CloneNo.: KP1 |
| Hôte: Mouse | Nom complet: CD68 molecule | Excitation/Emission maxima wavelengths: 592 nm / 611 nm |
| Isotype: IgG1, kappa | MW calculé 37 kDa | |

Applications

Applications testées:
FC (Intra)
Spécificité de l'espèce:
Humain

Informations générales

CD68 is a type I transmembrane glycoprotein that is highly expressed by human monocytes and tissue macrophages. It belongs to the lysosomal/endosomal-associated membrane glycoprotein (LAMP) family and primarily localizes to lysosomes and endosomes with a smaller fraction circulating to the cell surface. CD68 is also a member of the scavenger receptor family. It may play a role in phagocytic activities of tissue macrophages.

Stockage

Stockage:
Store at 2-8°C. Avoid exposure to light. Stable for one year after shipment.
Tampon de stockage:
PBS with 0.09% sodium azide and 0.5% BSA.

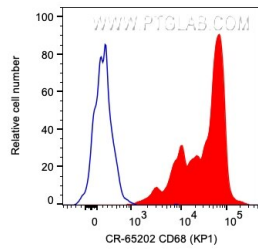
For technical support and original validation data for this product please contact:

T: 1 (888) 4PTGLAB (1-888-478-4522) (toll free
in USA), or 1(312) 455-8498 (outside USA)

E: proteintech@ptglab.com
W: ptglab.com

This product is exclusively available under Proteintech Group brand and is not available to purchase from any other manufacturer.

Données de validation sélectionnées



1×10^6 human PBMCs were intracellularly stained with 5 μ l Cardinal Red™ Anti-Human CD68 (CR-65202, Clone:KP1) (red) or unstained (blue). Cells were fixed and permeabilized with Transcription Factor Staining Buffer Kit (PF00011). Monocytes were gated.