

À des fins de recherche uniquement

# Anticorps Monoclonal anti-CD85j / LILRB1



Numéro de catalogue: **CR-65238**

## Informations de base

Numéro de catalogue:

CR-65238

Taille:

100tests, 5 ul/test

Hôte:

Mouse

Isotype:

IgG2b, kappa

Numéro d'acquisition GenBank:

BC015731

Identification du gène (NCBI):

10859

Nom complet:

leukocyte immunoglobulin-like  
receptor, subfamily B (with TM and  
ITIM domains), member 1

MW calculé

71 kDa

Méthode de purification:

N/A

CloneNo.:

GHI/75

Excitation/Emission maxima  
wavelengths:

592 nm / 611 nm

## Applications

Applications testées:

FC

Spécificité de l'espèce:

Humain

## Informations générales

### Stockage

Stockage:

Store at 2-8°C. Avoid exposure to light. Stable for one year after shipment.

Tampon de stockage:

PBS with 0.09% sodium azide and 0.5% BSA.

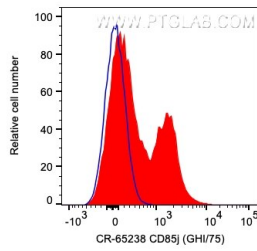
For technical support and original validation data for this product please contact:

T: 1 (888) 4PTGLAB (1-888-478-4522) (toll free  
in USA), or 1(312) 455-8498 (outside USA)

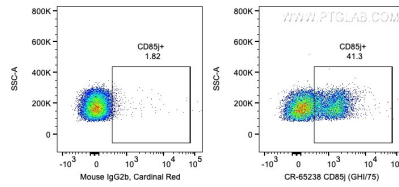
E: [proteintech@ptglab.com](mailto:proteintech@ptglab.com)  
W: [ptglab.com](http://ptglab.com)

**This product is exclusively available under Proteintech Group brand and is not available to purchase from any other manufacturer.**

## Données de validation sélectionnées



1X10<sup>6</sup> human PBMCs were surface stained with 5 ul Cardinal Red™ Anti-Human CD85j / LILRB1 (CR-65238, Clone:GHI/75) (red) or Mouse IgG2b Isotype Control. Cells were not fixed. Lymphocytes were gated.



1X10<sup>6</sup> human PBMCs were surface stained with 5 ul Cardinal Red™ Anti-Human CD85j / LILRB1 (CR-65238, Clone:GHI/75) or Mouse IgG2b Isotype Control. Cells were not fixed. Lymphocytes were gated.