

À des fins de recherche uniquement

Anticorps Monoclonal anti-CD35

Numéro de catalogue: **CR-65254**



Informations de base

Numéro de catalogue:
CR-65254

Taille:
100tests , 5 µl/test

Hôte:
Mouse

Isotype:
IgG1, kappa

Numéro d'acquisition GenBank:
NM_000573

Identification du gène (NCBI):
1378

Nom complet:
complement component (3b/4b)
receptor 1 (Knops blood group)

MW calculé
224 kDa

Méthode de purification:
N/A

CloneNo.:
E11

Excitation/Emission maxima
wavelengths:
592 nm / 611 nm

Applications

Applications testées:
FC

Spécificité de l'espèce:
Humain

Informations générales

Stockage

Stockage:
Store at 2-8°C. Avoid exposure to light. Stable for one year after shipment.
Tampon de stockage:
PBS with 0.09% sodium azide and 0.5% BSA.

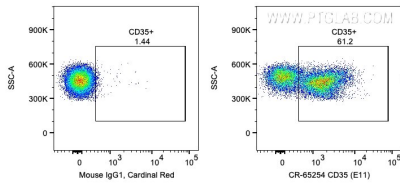
For technical support and original validation data for this product please contact:

T: 1 (888) 4PTGLAB (1-888-478-4522) (toll free
in USA), or 1(312) 455-8498 (outside USA)

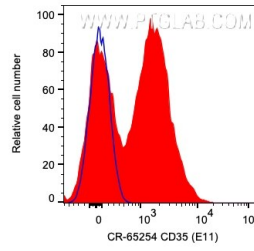
E: proteintech@ptglab.com
W: ptglab.com

This product is exclusively available under Proteintech Group brand and is not available to purchase from any other manufacturer.

Données de validation sélectionnées



1X10⁶ human PBMCs were surface stained with 5 ul Cardinal Red™ Anti-Human CD35 (CR-65254, Clone:E11) or Mouse IgG1 Isotype Control. Cells were not fixed. Lymphocytes were gated.



1X10⁶ human PBMCs were surface stained with 5 ul Cardinal Red™ Anti-Human CD35 (CR-65254, Clone:E11) (red) or Mouse IgG1 Isotype Control (blue). Cells were not fixed. Lymphocytes were gated.