

À des fins de recherche uniquement

Anticorps Monoclonal anti-CD26

Numéro de catalogue: CR-65267



Informations de base

Numéro de catalogue:
CR-65267

Taille:
100 tests, 5 µl/test

Hôte:
Mouse

Isotype:
IgG2a, kappa

Numéro d'acquisition GenBank:
BC013329

Identification du gène (NCBI):
1803

Nom complet:
dipeptidyl-peptidase 4

MW calculé
88 kDa

Méthode de purification:
Purification par affinité

CloneNo.:
BA5b

Excitation/Emission maxima
wavelengths:
592 nm / 611 nm

Applications

Applications testées:
FC

Spécificité de l'espèce:
Humain

Informations générales

CD26, also known as DPP4 (dipeptidyl peptidase-4), is a 110 kDa type II cell-surface glycoprotein widely expressed on T cells, activated B cells, activated NK cells and myeloid cells as well as on epithelial cells, fibroblasts, mesothelium, and endothelial cells of a variety of tissues (PMID:33777580; 26919392). It has ecto-enzyme activity in its extracellular domain and cleaves amino-terminal dipeptides with either L-proline or L-alanine at the penultimate position (PMID: 9553764). CD26 plays roles in diverse biological processes such as immunoregulation, glucose homeostasis, and tumorigenesis (PMID: 33777580).

Stockage

Stockage:

Store at 2-8°C. Avoid exposure to light. Stable for one year after shipment.

Tampon de stockage:

PBS with 0.09% sodium azide and 0.5% BSA.

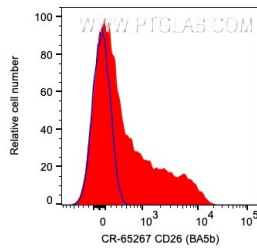
For technical support and original validation data for this product please contact:

T: 1 (888) 4PTGLAB (1-888-478-4522) (toll free
in USA), or 1(312) 455-8498 (outside USA)

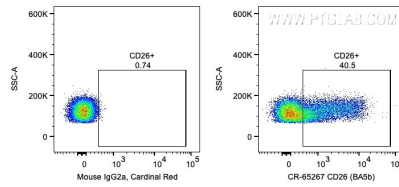
E: proteintech@ptglab.com
W: ptglab.com

This product is exclusively available under Proteintech Group brand and is not available to purchase from any other manufacturer.

Données de validation sélectionnées



1X10⁶ human PBMCs were surface stained with 5 ul Cardinal Red™ Anti-Human CD26 (CR-65267, Clone:BA5b) (red) or Mouse IgG2a Isotype Control (66360-2-Ig, Clone: K11A1B2A2). Cells were not fixed.



1X10⁶ human PBMCs were surface stained with 5 ul Cardinal Red™ Anti-Human CD26 (CR-65267, Clone:BA5b) or Mouse IgG2a Isotype Control. Cells were not fixed. Lymphocytes were gated.