

À des fins de recherche uniquement

Anticorps Monoclonal anti-CD107a / LAMP1



Numéro de catalogue: **FITC-65051**

Informations de base

Numéro de catalogue:

FITC-65051

Taille:

100 tests, 5 µl/test

Hôte:

Mouse

Isotype:

IgG1, kappa

Numéro d'acquisition GenBank:

BC006345

Identification du gène (NCBI):

3916

Nom complet:

lysosomal-associated membrane protein 1

Méthode de purification:

Purification par affinité

CloneNo.:

H4A3

Dilutions recommandées:

IF 1:50-1:500

Excitation/Emission maxima wavelengths:

495 nm / 524 nm

Applications

Applications testées:

FC, IF

Spécificité de l'espèce:

Humain

Contrôles positifs:

IF : cellules HeLa,

Informations générales

LAMP1 (CD107a) is a heavily glycosylated membrane protein enriched in the lysosomal membrane. LAMP1 is extensively glycosylated with asparagine-linked oligosaccharides which protect it from intracellular proteolysis (PMID: 10521503). Although LAMP1 is expressed largely in the endosome-lysosomal membrane of cells, it is also found on the plasma membrane (PMID: 16168398). Elevated LAMP1 expression at the cell surface has also been detected during platelet and granulocytic cell activation, as well as in some tumor cells (PMID: 29085473). LAMP1 functions to provide selectins with carbohydrate ligands. This protein has also been shown to be a marker of degranulation on lymphocytes such as CD8+ and NK cells and may also play a role in tumor cell differentiation and metastasis (PMID: 18835598; 29085473; 9426697).

Stockage

Stockage:

Store at 2-8°C. Avoid exposure to light. Stable for one year after shipment.

Tampon de stockage:

PBS with 0.09% sodium azide and 0.5% BSA.

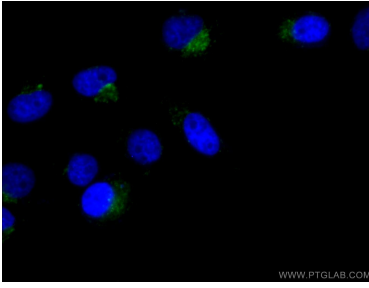
For technical support and original validation data for this product please contact:

T: 1 (888) 4PTGLAB (1-888-478-4522) (toll free in USA), or 1(312) 455-8498 (outside USA)

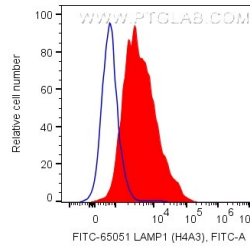
E: proteintech@ptglab.com
W: ptglab.com

This product is exclusively available under Proteintech Group brand and is not available to purchase from any other manufacturer.

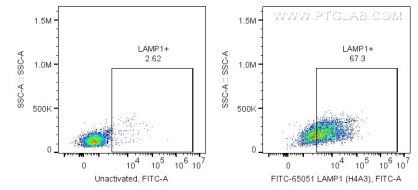
Données de validation sélectionnées



Immunofluorescent analysis of (4% PFA) fixed HeLa cells using FITC-65051 (CD107a antibody) at dilution of 1:50 and CoraLite488-Conjugated AffiniPure Goat Anti-Mouse IgG(H+L).



1X10⁶ PHA-activated human PBMCs were surface stained with 5 ul FITC Plus Plus Anti-Human CD107a (FITC-65051, Clone: H4A3). Unactivated PBMCs were used as negative control. Cells were not fixed. Lymphocytes were gated.



1X10⁶ PHA-activated human PBMCs were surface stained with 5 ul FITC Plus Plus Anti-Human CD107a (FITC-65051, Clone: H4A3). Unactivated PBMCs were used as negative control. Cells were not fixed. Lymphocytes were gated.